

SECTION **SR**
SRS AIRBAG

A
B
C
D
E
F
G
SR
I
J
K
L
M
N
O
P

CONTENTS

PRECAUTION	2	SIDE CURTAIN AIR BAG MODULE	22
PRECAUTIONS	2	Explode View	22
Precaution for Supplemental Restraint System (SRS) "AIR BAG" and "SEAT BELT PRE-TENSIONER"	2	Removal and Installation	22
Service	2	SIDE AIR BAG MODULE	24
Precaution for Work	2	Removal and Installation	24
PREPARATION	4	CRASH ZONE SENSOR	25
PREPARATION	4	Explode View	25
Special Service Tool	4	Removal and Installation	25
BASIC INSPECTION	5	SIDE AIR BAG (SATELLITE) SENSOR	27
COLLISION DIAGNOSIS	5	Exploded View	27
For Frontal Collision	5	Removal and Installation	27
For Side and Rollover Collision	7	DIAGNOSIS SENSOR UNIT	30
REMOVAL AND INSTALLATION	12	Exploded View	30
DRIVER AIR BAG MODULE	12	Removal and Installation	30
Exploded View	12	SEAT BELT PRE-TENSIONER	32
Removal and Installation	12	Removal and Installation	32
SPIRAL CABLE	16	FRONT SEAT BELT BUCKLE SWITCH	33
Exploded View	16	Removal and Installation	33
Removal and Installation	16	OCCUPANT CLASSIFICATION SYSTEM	34
FRONT PASSENGER AIR BAG MODULE	19	Exploded View	34
Exploded View	19	Removal and Installation - Control Unit	34
Removal and Installation	19	Removal and Installation - Sensors	35
		FRONT PASSENGER AIR BAG OFF INDICATOR	45
		Exploded View	45
		Removal and Installation	45

PRECAUTIONS

< PRECAUTION >

PRECAUTION

PRECAUTIONS

Precaution for Supplemental Restraint System (SRS) "AIR BAG" and "SEAT BELT PRE-TENSIONER"

INFOID:0000000112299316

The Supplemental Restraint System such as "AIR BAG" and "SEAT BELT PRE-TENSIONER", used along with a front seat belt, helps to reduce the risk or severity of injury to the driver and front passenger for certain types of collision. Information necessary to service the system safely is included in the SR and SB section of this Service Manual.

WARNING:

- To avoid rendering the SRS inoperative, which could increase the risk of personal injury or death in the event of a collision which would result in air bag inflation, all maintenance must be performed by an authorized NISSAN/INFINITI dealer.
- Improper maintenance, including incorrect removal and installation of the SRS, can lead to personal injury caused by unintentional activation of the system. For removal of Spiral Cable and Air Bag Module, see the SR section.
- Do not use electrical test equipment on any circuit related to the SRS unless instructed to in this Service Manual. SRS wiring harnesses can be identified by yellow and/or orange harnesses or harness connectors.

PRECAUTIONS WHEN USING POWER TOOLS (AIR OR ELECTRIC) AND HAMMERS

WARNING:

- When working near the Airbag Diagnosis Sensor Unit or other Airbag System sensors with the Ignition ON or engine running, DO NOT use air or electric power tools or strike near the sensor(s) with a hammer. Heavy vibration could activate the sensor(s) and deploy the air bag(s), possibly causing serious injury.
- When using air or electric power tools or hammers, always switch the Ignition OFF, disconnect the battery and wait at least three minutes before performing any service.

Service

INFOID:000000011935637

- Do not use electrical test equipment to check SRS circuits unless instructed to in this Service Manual.
- Before servicing the SRS, turn ignition switch OFF, disconnect both battery cables and wait at least 3 minutes.
For approximately 3 minutes after the cables are removed, it is still possible for the air bag and seat belt pretensioner to deploy. Therefore, do not work on any SRS connectors or wires until at least 3 minutes have passed.
- Diagnosis sensor unit must always be installed with their arrow marks "←" pointing towards the front of the vehicle for proper operation. Also check diagnosis sensor unit for cracks, deformities or rust before installation and replace as required.
- The spiral cable must be aligned with the neutral position since its rotations are limited. Do not turn steering wheel and column after removal of steering gear.
- Handle air bag module carefully. Always place driver and front passenger air bag modules with the pad side facing upward and seat mounted front side air bag module standing with the stud bolt side facing down.
- Conduct self-diagnosis to check entire SRS for proper function after replacing any components.
- After air bag inflates, the front instrument panel assembly should be replaced if damaged.
- Always replace instrument panel pad following front passenger air bag deployment.

Precaution for Work

INFOID:000000011935639

- When removing or disassembling each component, be careful not to damage or deform it. If a component may be subject to interference, be sure to protect it with a shop cloth.
- When removing (disengaging) components with a screwdriver or similar tool, be sure to wrap the component with a shop cloth or vinyl tape to protect it.
- Protect the removed parts with a shop cloth and prevent them from being dropped.
- Replace a deformed or damaged clip.
- If a part is specified as a non-reusable part, always replace it with a new one.
- Be sure to tighten bolts and nuts securely to the specified torque.
- After installation is complete, be sure to check that each part works properly.

PRECAUTIONS

< PRECAUTION >

- Follow the steps below to clean components:
- Water soluble dirt:
 - Dip a soft cloth into lukewarm water, wring the water out of the cloth and wipe the dirty area.
 - Then rub with a soft, dry cloth.
- Oily dirt:
 - Dip a soft cloth into lukewarm water with mild detergent (concentration: within 2 to 3%) and wipe the dirty area.
 - Then dip a cloth into fresh water, wring the water out of the cloth and wipe the detergent off.
 - Then rub with a soft, dry cloth.
- Do not use organic solvent such as thinner, benzene, alcohol or gasoline.
- For genuine leather seats, use a genuine leather seat cleaner.

A

B

C

D

E

F

G

SR

I

J

K

L

M

N

O

P

PREPARATION

< PREPARATION >

PREPARATION

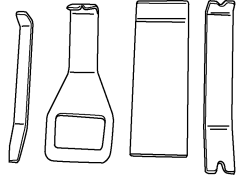
PREPARATION

Special Service Tool

INFOID:000000011935640

The actual shape of the tools may differ from those illustrated here.

Tool number (TechMate No.) Tool name	Description
— (J-46534) Trim Tool Set	Removing trim components



AWJIA0483ZZ

COLLISION DIAGNOSIS

< BASIC INSPECTION >

BASIC INSPECTION

COLLISION DIAGNOSIS

For Frontal Collision

INFOID:0000000011935641

FOR FRONTAL COLLISION: When SRS is activated in a collision

CAUTION:

Due to varying models and option levels, not all parts listed in the chart below apply to all vehicles.

WORK PROCEDURE

1. Before performing any of the following steps, ensure that all vehicle body and structural repairs have been completed.
2. Replace the diagnosis sensor unit.
3. Remove the front air bag modules, crash zone sensor assembly, bracket and seat belt pre-tensioner assemblies.
4. Check the SRS components using the table below:
Replace any SRS components showing visible signs of damage. (dents, cracks and deformation, etc.)
5. Install new front air bag modules, crash zone sensor assembly, bracket and seat belt pre-tensioner assemblies.
6. Perform self-diagnosis using CONSULT or air bag warning lamp. Refer to [SRC-16. "Trouble Diagnosis with CONSULT"](#) for details.
Ensure entire SRS operates properly.
7. After the work is completed, perform self-diagnosis to check that no malfunction is detected. Refer to [SRC-15. "SRS Operation Check"](#).

SRS INSPECTION (FOR FRONTAL COLLISION)

Part	Inspection
Driver air bag module	If the driver air bag has deployed: REPLACE Install with new fasteners.
Front passenger air bag module (if equipped)	If the front passenger air bag has deployed: REPLACE Install with new fasteners.
Crash zone sensor	If any of the front air bags or seat belt pre-tensioners* have been activated: REPLACE the crash zone sensor and bracket with new fasteners. *: Confirm seat belt pre-tensioner activation using CONSULT only.
Seat belt pre-tensioner assemblies (All applicable locations: buckle, retractor, lap outer)	If either the driver or passenger seat belt pre-tensioner* has been activated: REPLACE all seat belt pre-tensioner assemblies with new fasteners. *: Confirm seat belt pre-tensioner activation using CONSULT only.
Diagnosis sensor unit	If any of the SRS components have been activated: REPLACE the diagnosis sensor unit. Install with new fasteners.
Steering wheel	<ol style="list-style-type: none"> 1. Visually check steering wheel for deformities. 2. Check harness (built into steering wheel) and connectors for damage, and terminals for deformities. 3. Install driver air bag module into the steering wheel to check fit and alignment with the wheel. 4. Check steering wheel for excessive free play. 5. If no damage is found, reinstall. 6. If damaged — REPLACE.
Spiral cable	If the driver front air bag has deployed: REPLACE the spiral cable.

COLLISION DIAGNOSIS

< BASIC INSPECTION >

Part	Inspection
Occupant classification system (Passenger seat)	<ol style="list-style-type: none"> 1. Remove passenger seat assembly. 2. Check control unit case for dents, cracks or deformities. 3. Check connectors for damage and terminals for deformities. 4. Check seat frame and cushion pan for dents or deformities. 5. If no damage is found, reinstall seat with new fasteners. 6. If damaged — REPLACE seat cushion assembly with new fasteners. 7. Perform zero point reset function after front passenger seat is installed in the vehicle and all bolts are tightened to specification. Refer to SRC-35. "Work Flow".
Harness and connectors	<ol style="list-style-type: none"> 1. Check connectors for poor connection, damage, and terminals for deformities. 2. Check harness for binding, chafing, cuts, or deformities. 3. If no damage is found, reinstall the harness and connectors. 4. If damaged — REPLACE the damaged harness. Do not attempt to repair, splice or modify any SRS harness.
Instrument panel assembly	If the passenger front air bag has deployed: REPLACE the instrument panel assembly. (integrated type)

FOR FRONTAL COLLISION: When SRS is not activated in a collision

CAUTION:

Due to varying models and option levels, not all parts listed in the chart below apply to all vehicles.

WORK PROCEDURE

1. Before performing any of the following steps, ensure that all vehicle body and structural repairs have been completed.
2. Check the SRS components using the table below:
Replace any SRS components showing visible signs of damage. (dents, cracks and deformation, etc.)
3. Perform self-diagnosis using CONSULT or air bag warning lamp. Refer to [SRC-16. "Trouble Diagnosis with CONSULT"](#) for details.
Ensure entire SRS operates properly.
4. After the work is completed, perform self-diagnosis to check that no malfunction is detected. Refer to [SRC-15. "SRS Operation Check"](#).

SRS INSPECTION (FOR FRONTAL COLLISION)

Part	Inspection
Driver air bag module	<p>If the driver air bag has NOT been activated:</p> <ol style="list-style-type: none"> 1. Remove driver air bag module. Check harness cover and connectors for damage, terminals for deformities, and harness for binding. 2. Install driver air bag module into the steering wheel to check fit and alignment with the wheel. 3. If no damage is found, reinstall with new fasteners. 4. If damaged — REPLACE. Install driver air bag modules with new fasteners.
Front passenger air bag module (if equipped)	<p>If the front passenger air bag has NOT been activated:</p> <ol style="list-style-type: none"> 1. Remove front passenger air bag module. Check harness cover and connectors for damage, terminals for deformities, and harness for binding. 2. Install front passenger air bag module into the instrument panel to check fit with the instrument panel. 3. If no damage is found, reinstall with new fasteners. 4. If damaged — REPLACE. Install front passenger air bag modules with new fasteners.
Crash zone sensor	<p>If the front air bags or seat belt pre-tensioners have NOT been activated:</p> <ol style="list-style-type: none"> 1. Remove the crash zone sensor. Check harness connectors for damage, terminals for deformities, and harness for binding. 2. Check for visible signs of damage (dents, cracks, deformation) of the crash zone sensor and bracket. 3. Install the crash zone sensor to check fit. 4. If no damage is found, reinstall with new fasteners. 5. If damaged — REPLACE the crash zone sensor and bracket with new fasteners.

COLLISION DIAGNOSIS

< BASIC INSPECTION >

Part	Inspection
Seat belt pre-tensioner assemblies (All applicable locations: buckle, retractor, lap outer)	If the pre-tensioners have NOT been activated: <ol style="list-style-type: none"> 1. Remove seat belt pre-tensioners. Check harness cover and connectors for damage, terminals for deformities, and harness for binding. 2. Check belts for damage and anchors for loose mounting. 3. Check retractor for smooth operation. 4. Check seat belt adjuster for damage. 5. Check for deformities of the center pillar inner. 6. If no damage is found, reinstall seat belt pre-tensioner assembly with new fasteners. 7. If damaged —REPLACE. Install the seat belt pre-tensioner assembly with new fasteners.
Diagnosis sensor unit	If none of the SRS components have been activated: <ol style="list-style-type: none"> 1. Check case for dents, cracks or deformities. 2. Check connectors for damage, and terminals for deformities. 3. If no damage is found, reinstall with new fasteners. 4. If damaged — REPLACE. Install diagnosis sensor unit with new fasteners.
Steering wheel	<ol style="list-style-type: none"> 1. Visually check steering wheel for deformities. 2. Check harness (built into steering wheel) and connectors for damage, and terminals for deformities. 3. Install driver air bag module into the steering wheel to check fit and alignment with the wheel. 4. Check steering wheel for excessive free play. 5. If no damage is found, reinstall. 6. If damaged — REPLACE.
Spiral cable	If the driver front air bag has not deployed: <ol style="list-style-type: none"> 1. Visually check spiral cable and combination switch for damage. 2. Check connectors and protective tape for damage. 3. Check steering wheel for noise, binding or heavy operation. 4. If no damage is found, reinstall. 5. If damaged — REPLACE.
Occupant classification system (Passenger seat)	<ol style="list-style-type: none"> 1. Remove passenger seat assembly. 2. Check control unit case for dents, cracks or deformities. 3. Check connectors for damage and terminals for deformities. 4. Check seat frame and cushion pan for dents or deformities. 5. If no damage is found, reinstall seat with new fasteners. 6. If damaged — REPLACE seat cushion assembly with new fasteners. 7. Perform zero point reset function after front passenger seat is installed in the vehicle and all bolts are tightened to specification. Refer to SRC-35. "Work Flow".
Harness and connectors	<ol style="list-style-type: none"> 1. Check connectors for poor connection, damage, and terminals for deformities. 2. Check harness for binding, chafing, cuts, or deformities. 3. If no damage is found, reinstall the harness and connectors. 4. If damaged —REPLACE the damaged harness. Do not attempt to repair, splice or modify any SRS harness.
Instrument panel assembly	If the passenger front air bag has NOT deployed: <ol style="list-style-type: none"> 1. Visually check instrument panel for damage. 2. If no damage is found, reinstall the instrument panel assembly. 3. If damaged—REPLACE the instrument panel assembly.

A
B
C
D
E
F
G
SR
I
J
K
L
M
N
O
P

For Side and Rollover Collision

INFOID:000000011935642

FOR SIDE AND ROLLOVER COLLISION: When SRS is activated in a collision

CAUTION:

Due to varying models and option levels, not all parts listed in the chart below apply to all vehicles.

WORK PROCEDURE

1. Before performing any of the following steps, ensure that all vehicle body and structural repairs have been completed.
2. Replace the following components:
 - Front seat back assembly (on the side on which side air bag is activated).
 - Door finisher (on the side on which door-mounted curtain air bag is activated).
 - Pop-up roll bar assemblies and pop-up roll bar covers.
 - Side air bag (satellite) sensor LH/RH (on the side on which side air bag is activated).
 - Diagnosis sensor unit.

COLLISION DIAGNOSIS

< BASIC INSPECTION >

- Seat belt pre-tensioner assemblies.
- 3. Check the SRS components and the related parts using the following table.
Replace any SRS components and the related parts showing visible signs of damage (dents, cracks, deformation, etc.).
- 4. Perform self-diagnosis using CONSULT and "AIR BAG" warning lamp. Refer to [SRC-15, "SRS Operation Check"](#) for details. Make sure entire SRS operates properly.
- 5. After the work is completed, perform self-diagnosis to check that no malfunction is detected. Refer to [SRC-16, "Trouble Diagnosis with CONSULT"](#).

SRS INSPECTION (FOR SIDE AND ROLLOVER COLLISION)

Part	Inspection
Side curtain air bag module LH	If the side curtain air bag LH has deployed: REPLACE the side curtain air bag module LH. Install with new fasteners.
Side curtain air bag module RH	If the side curtain air bag RH has deployed: REPLACE the side curtain air bag module RH. Install with new fasteners.
Front side air bag module LH	If the front side air bag LH has deployed: REPLACE front seatback assembly LH.
Front side air bag module RH	If the front side air bag RH has deployed: REPLACE front seatback assembly RH.
Side air bag (satellite) sensor (LH or RH)	If any of the SRS components have deployed: REPLACE the side air bag (satellite) sensor on the collision side with new fasteners.
Door (satellite) sensor (LH or RH)	If any of the SRS components have deployed: REPLACE the door (satellite) sensor on the collision side with new fasteners.
Diagnosis sensor unit	If any of the SRS components have deployed: REPLACE the diagnosis sensor unit with new fasteners.
Seat belt pre-tensioner assemblies (All applicable locations: buckle, retractor, lap outer)	If either the driver or passenger seat belt pre-tensioner* has been activated: REPLACE all seat belt pre-tensioner assemblies with new fasteners. *: Confirm seat belt pre-tensioner activation using CONSULT only.
Center inner pillar	1. Check the center inner pillar on the collision side for damage (dents, cracks, deformation). 2. If damaged —REPAIR the center inner pillar.
Seat (if equipped with front side air bag)	If either the front LH or front RH side air bag modules has been deployed: REPLACE front seatback assembly on the deployed side.
Trim/headlining	1. Check for visible signs of damage (dents, cracks, deformation) of the interior trim on the collision side. 2. If damaged — REPLACE the damaged trim parts.
Door-mounted curtain air bag module LH	If the door-mounted curtain air bag module LH has been deployed: REPLACE the door finisher LH and door-mounted curtain air bag module. Install with new fasteners.
Door-mounted curtain air bag module RH	If the door-mounted curtain air bag module RH has been deployed: REPLACE the door finisher RH and door-mounted curtain air bag module. Install with new fasteners.
Occupant classification system (Passenger seat)	1. Remove passenger seat assembly. 2. Check control unit case for dents, cracks or deformities. 3. Check connectors for damage and terminals for deformities. 4. Check seat frame and cushion pan for dents or deformities. 5. If no damage is found, reinstall seat with new fasteners. 6. If damaged — REPLACE seat cushion assembly with new fasteners. 7. Perform zero point reset function after front passenger seat is installed in the vehicle and all bolts are tightened to specification. Refer to SRC-35, "Work Flow" .
Pop-up roll bar assemblies	If the pop-up roll bar has deployed: REPLACE pop-up roll bar assemblies and pop-up roll bar covers. Install with new fasteners.

FOR SIDE AND ROLLOVER COLLISION: When SRS is not activated in a collision

CAUTION:

COLLISION DIAGNOSIS

< BASIC INSPECTION >

Due to varying models and option levels, not all parts listed in the chart below apply to all vehicles.

WORK PROCEDURE

1. Before performing any of the following steps, ensure that all vehicle body and structural repairs have been completed.
2. Check the SRS components and the related parts using the following table.
 - If the front seat back assembly is damaged, the front seat back assembly must be replaced.
 - If the door finisher assembly is damaged, the door finisher assembly and door-mounted curtain air bag module must be replaced.
3. Perform self-diagnosis using CONSULT and "AIR BAG" warning lamp. Refer to [SRC-15, "SRS Operation Check"](#) for details. Make sure entire SRS operates properly.
4. After the work is completed, perform self-diagnosis to check that no malfunction is detected. Refer to [SRC-16, "Trouble Diagnosis with CONSULT"](#).

SRS INSPECTION (FOR SIDE AND ROLLOVER COLLISION)

Part	Inspection
Side curtain air bag module LH	If the side curtain air bag LH has NOT deployed: <ol style="list-style-type: none"> 1. Check for visible signs of damage (dents, tears, deformation) of the center pillar on the collision side. 2. If damaged - Remove the side curtain air bag module LH. 3. Check for visible signs of damage (tears etc.) of the side curtain air bag module LH. 4. Check harness and connectors for damage, and terminals for deformities. 5. If no damage is found, reinstall the side curtain air bag module LH with new fasteners. 6. If damaged — REPLACE the side curtain air bag module LH with new fasteners.
Side curtain air bag module RH	If the side curtain air bag RH has NOT deployed: <ol style="list-style-type: none"> 1. Check for visible signs of damage (dents, tears, deformation) of the center pillar on the collision side. 2. If damaged - Remove the side curtain air bag module RH. 3. Check for visible signs of damage (tears etc.) of the side curtain air bag module RH. 4. Check harness and connectors for damage, and terminals for deformities. 5. If no damage is found, reinstall the side curtain air bag module RH with new fasteners. 6. If damaged — REPLACE the side curtain air bag module RH with new fasteners.
Front side air bag module LH	If the front LH side air bag has NOT deployed: <ol style="list-style-type: none"> 1. Check for visible signs of damage (dents, tears, deformation) of the seat back on the collision side. 2. Check harness and connectors for damage, and terminals for deformities. 3. If damaged — REPLACE the front seatback assembly LH.
Front side air bag module RH	If the front side air bag RH has NOT deployed: <ol style="list-style-type: none"> 1. Check for visible signs of damage (dents, tears, deformation) of the seat back on the collision side. 2. Check harness and connectors for damage, and terminals for deformities. 3. If damaged — REPLACE the front seatback assembly RH.
Side air bag (satellite) sensor (LH or RH)	If none of the SRS components have been activated: <ol style="list-style-type: none"> 1. Remove the side air bag (satellite) sensor (LH or RH) on the collision side. Check harness connectors for damage, terminals for deformities, and harness for binding. 2. Check for visible signs of damage (dents, cracks, deformation) of the side air bag (satellite) sensor (LH or RH). 3. Install the side air bag (satellite) sensor (LH or RH) to check fit. 4. If no damage is found, reinstall the side air bag (satellite) sensor (LH or RH) with new fasteners. 5. If damaged — REPLACE the side air bag (satellite) sensor (LH or RH) with new fasteners.
Door (satellite) sensor (LH or RH)	If none of the SRS components have been activated: <ol style="list-style-type: none"> 1. Remove the door (satellite) sensor (LH or RH) on the collision side. Check harness connectors for damage, terminals for deformities, and harness for binding. 2. Check for visible signs of damage (dents, cracks, deformation) of the door (satellite) sensor (LH or RH). 3. Install the door (satellite) sensor (LH or RH) to check fit. 4. If no damage is found, reinstall the door (satellite) sensor (LH or RH) with new fasteners. 5. If damaged — REPLACE the door (satellite) sensor (LH or RH) with new fasteners.

COLLISION DIAGNOSIS

< BASIC INSPECTION >

Part	Inspection
Diagnosis sensor unit	<p>If none of the SRS components have been activated:</p> <ol style="list-style-type: none"> 1. Check case and bracket for dents, cracks or deformities. 2. Check connectors for damage, and terminals for deformities. 3. If no damage is found, reinstall the diagnosis sensor unit with new fasteners. 4. If damaged — REPLACE the diagnosis sensor unit with new fasteners.
Seat belt pre-tensioner assemblies (All applicable locations: buckle, retractor, lap outer)	<p>If the pre-tensioners have NOT been activated:</p> <ol style="list-style-type: none"> 1. Remove seat belt pre-tensioners. Check harness cover and connectors for damage, terminals for deformities, and harness for binding. 2. Check belts for damage and anchors for loose mounting. 3. Check retractor for smooth operation. 4. Check seat belt adjuster for damage. 5. Check for deformities of the center pillar inner. 6. If no damage is found, reinstall seat belt pre-tensioner assembly with new fasteners. 7. If damaged —REPLACE. Install the seat belt pre-tensioner assembly with new fasteners.
Seat (with front side air bag)	<p>If the front LH or front RH side air bag modules have NOT deployed:</p> <ol style="list-style-type: none"> 1. Visually check the seat on the collision side. 2. Remove the seat on the collision side and check the following for damage and deformities. <ul style="list-style-type: none"> - Harness, connectors and terminals - Frame and recliner (for front and rear seat), and also adjuster and slides (for front seat) 3. If no damage is found, reinstall the seat. 4. If damaged— REPLACE the damaged seat parts using new fasteners. If the front seat back is damaged, the front seat back assembly must be replaced.
Center inner pillar	<ol style="list-style-type: none"> 1. Check the center inner pillar on the collision side for damage (dents, cracks, deformation, etc.). 2. If damaged - REPAIR the center inner pillar.
Trim/headlining	<ol style="list-style-type: none"> 1. Check for visible signs of damage (dents, cracks, deformation, etc.) of the interior trim on the collision side. 2. If damaged - REPLACE the damaged trim parts.
Door-mounted curtain air bag module LH	<p>If the door-mounted curtain air bag LH has NOT deployed:</p> <ol style="list-style-type: none"> 1. Check for visible signs of damage (dents, tears, deformation, etc.) of the door finisher on the collision side. 2. If damaged - REPLACE the door finisher LH with new fasteners. 3. Check for visible signs of damage (tears etc.) of the door-mounted curtain air bag module LH. 4. Check harness and connectors for damage, and terminals for deformities. 5. If no damage is found, reinstall door finisher. <p>CAUTION: When removing door mounted curtain air bag module from door finisher, do not reuse door finisher.</p> <ol style="list-style-type: none"> 6. If damaged - REPLACE the door finisher LH and door-mounted curtain air bag module LH with new fasteners.
Door-mounted curtain air bag module RH	<p>If the door-mounted curtain air bag RH has NOT deployed:</p> <ol style="list-style-type: none"> 1. Check for visible signs of damage (dents, tears, deformation, etc.) of the door finisher on the collision side. 2. If damaged - REPLACE the door finisher RH with new fasteners. 3. Check for visible signs of damage (tears etc.) of the door-mounted curtain air bag module RH. 4. Check harness and connectors for damage, and terminals for deformities. 5. If no damage is found, reinstall door finisher. <p>CAUTION: When removing door mounted curtain air bag module from door finisher, do not reuse door finisher.</p> <ol style="list-style-type: none"> 6. If damaged - REPLACE the door finisher RH and door-mounted curtain air bag module RH with new fasteners.

COLLISION DIAGNOSIS

< BASIC INSPECTION >

Part	Inspection	
Occupant classification system (Passenger seat)	1. Remove passenger seat assembly.	A
	2. Check control unit case for dents, cracks or deformities.	
	3. Check connectors for damage and terminals for deformities.	
	4. Check seat frame and cushion pan for dents or deformities.	B
	5. If no damage is found, reinstall seat with new fasteners.	
	6. If damaged — REPLACE seat cushion assembly with new fasteners.	
	7. Perform zero point reset function after front passenger seat is installed in the vehicle and all bolts are tightened to specification. Refer to SRC-35, "Work Flow" .	C
Pop-up roll bar	If the pop-up roll bar has NOT deployed:	
	1. Check for visible signs of damage (dents, tears, deformation, etc.) of the pop-up roll bar.	
	2. If damaged - REPLACE the pop-up roll bar with new fasteners.	D
	3. Check harness and connectors for damage, and terminals for deformities.	
	4. If no damage is found, reinstall the pop-up roll bar with new fasteners.	
	5. Check for visible signs of damage (dents, cracks, deformation, etc.) of the seatback support brace assembly.	E
6. If damaged - REPAIR the seatback support brace assembly.		

SR

DRIVER AIR BAG MODULE

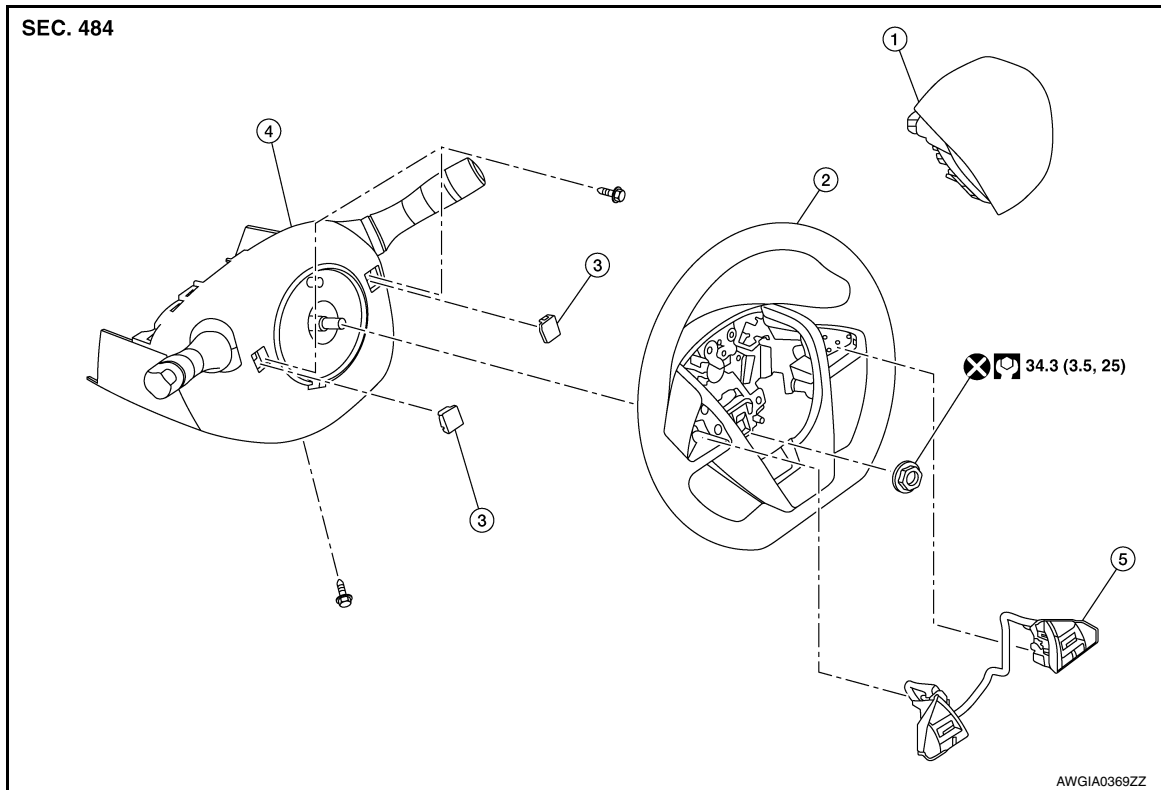
< REMOVAL AND INSTALLATION >

REMOVAL AND INSTALLATION

DRIVER AIR BAG MODULE

Exploded View

INFOID:000000011935643



- | | | |
|--------------------------|----------------------------|----------|
| 1. Driver air bag module | 2. Steering wheel | 3. Cover |
| 4. Steering column cover | 5. Steering wheel switches | |

Removal and Installation

INFOID:000000011935644

CAUTION:

- Before servicing, turn ignition switch OFF, disconnect both battery terminals and wait at least 3 minutes.
- Do not use air tools or electric tools for servicing.
- Always work from the side of air bag module. Do not work from the front of it.
- Always place air bag module with pad side facing upward.
- Do not cause impact to the air bag module by dropping etc. Replace the air bag module if it has been dropped or sustained an impact.
- Do not allow oil, grease, detergent or water to come in contact with the driver air bag module.

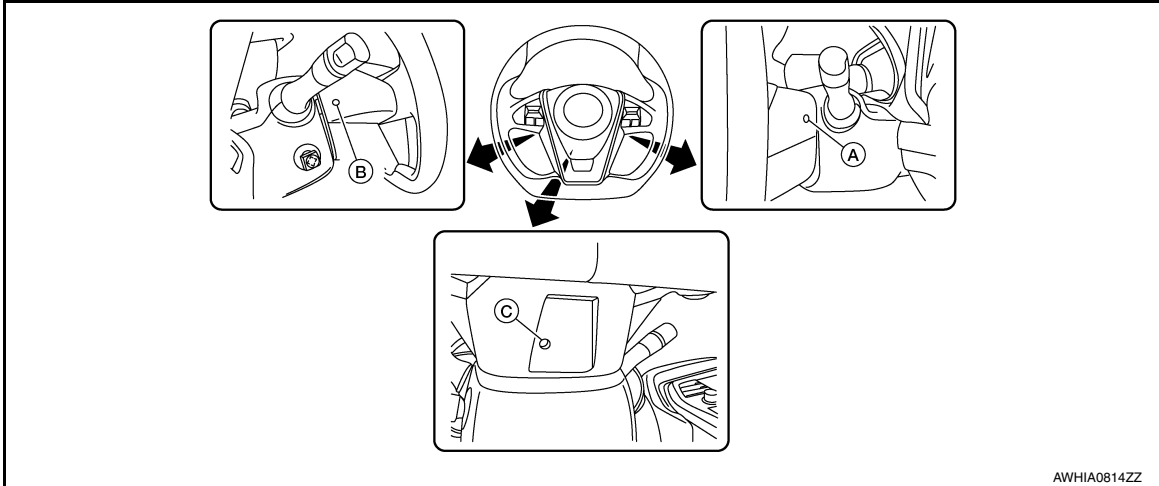
REMOVAL

1. Disconnect the negative and positive battery terminals, then wait at least 3 minutes. Refer to [PG-101, "Removal and Installation \(Battery\)"](#).
2. Set the front wheels and tires in the straight-ahead position.
3. Remove driver air bag module, using the following procedure:
 - a. Locate retaining clip access hole (C) and insert a 5.0 mm (0.197 in) diameter, blunt-ended tool.

DRIVER AIR BAG MODULE

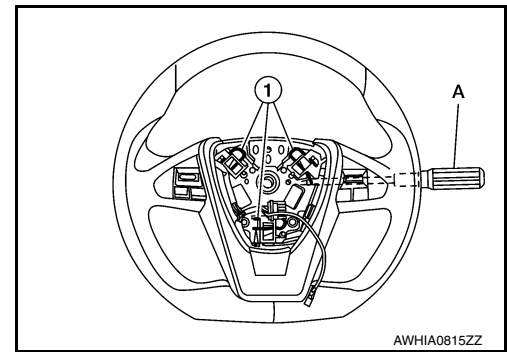
< REMOVAL AND INSTALLATION >

- b. Locate retaining clip access holes (A/B) and insert a 5.0 mm (0.197 in) diameter, blunt-ended tool.



NOTE:

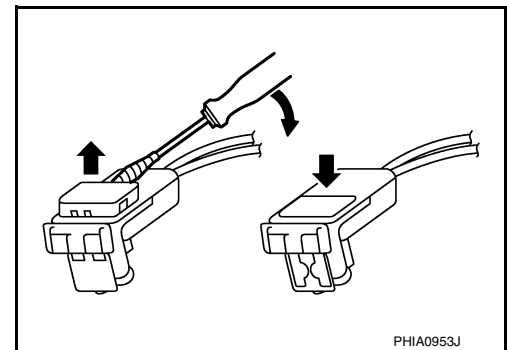
When inserting a blunt-ended tool (A), check that the tool contacts torsion spring (1). By pressing the torsion spring, connection of the driver air bag module is released from the steering wheel.



4. Disconnect the harness connector from the driver air bag and horn.

CAUTION:

- For installing/removing the driver air bag module harness connector, insert a thin screwdriver wrapped in tape into the notch, then lift the lock and remove the connector as shown.
- Install the connector with the lock raised, make sure lock is not bent, then push the lock into the connector as shown.
- After installing the connector, check that the lock is pushed in securely.

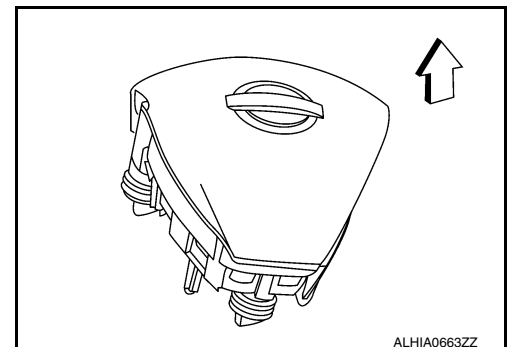


5. Remove the driver air bag module.

CAUTION:

- Always place the driver air bag module with pad side facing upward.

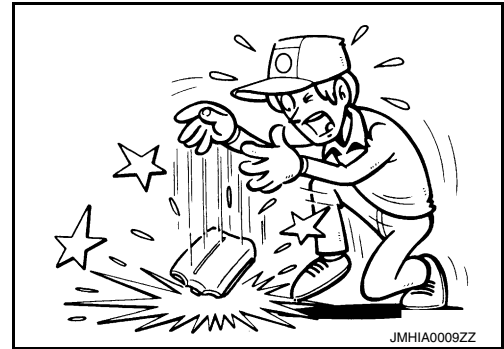
↕ : Upward



DRIVER AIR BAG MODULE

< REMOVAL AND INSTALLATION >

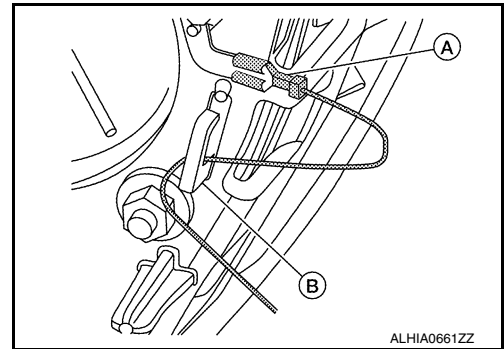
- Replace the driver air bag module if it has been dropped or sustained an impact.
- Do not strike the driver air bag module.



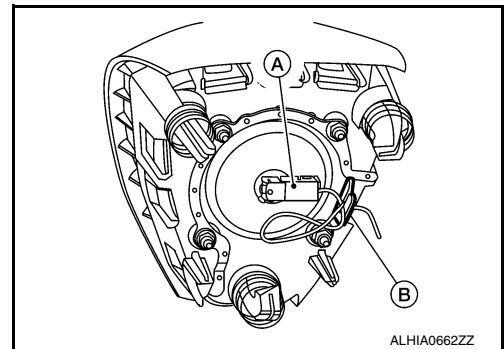
- Do not insert any foreign objects (screwdriver, etc.) into the driver air bag module.
- Do not disassemble the driver air bag module.
- Do not expose the driver air bag module to temperatures exceeding 90° C (194°F).
- Do not allow oil, grease, detergent or water to come in contact with the driver air bag module.

INSTALLATION

1. Attach the horn harness (A) to the driver air bag module and route horn harness through the hook (B) as shown.

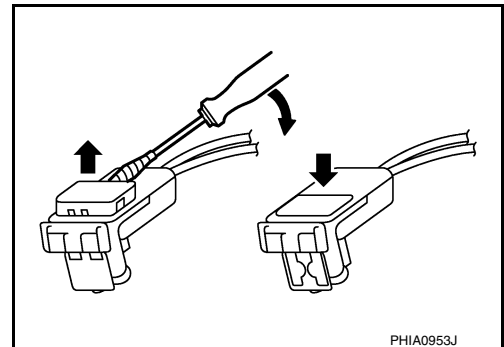


2. Route the driver air bag module harness through the hook (B) on driver air bag module and connect harness connector (A) to the driver air bag module.



CAUTION:

- For installing/removing the driver air bag module harness connector, insert a thin screwdriver wrapped in tape into the notch, then lift the lock and remove the connector as shown.
- Install the connector with the lock raised, make sure lock is not bent, then push the lock into the connector as shown.
- After installing the connector, check that the lock is pushed in securely.



3. Install the driver air bag module.

CAUTION:

- After the work is completed, check the function of the horn.

DRIVER AIR BAG MODULE

< REMOVAL AND INSTALLATION >

- After the work is completed, make sure no system malfunction is detected by air bag warning lamp.
- In case a malfunction is detected by the air bag warning lamp, reset by the self-diagnosis function and delete the memory by CONSULT.
- If a malfunction is still detected after the above operation, perform self-diagnosis to repair malfunctions. Refer to [SRC-16, "SRS Final Check"](#).

A

B

C

D

E

F

G

SR

I

J

K

L

M

N

O

P

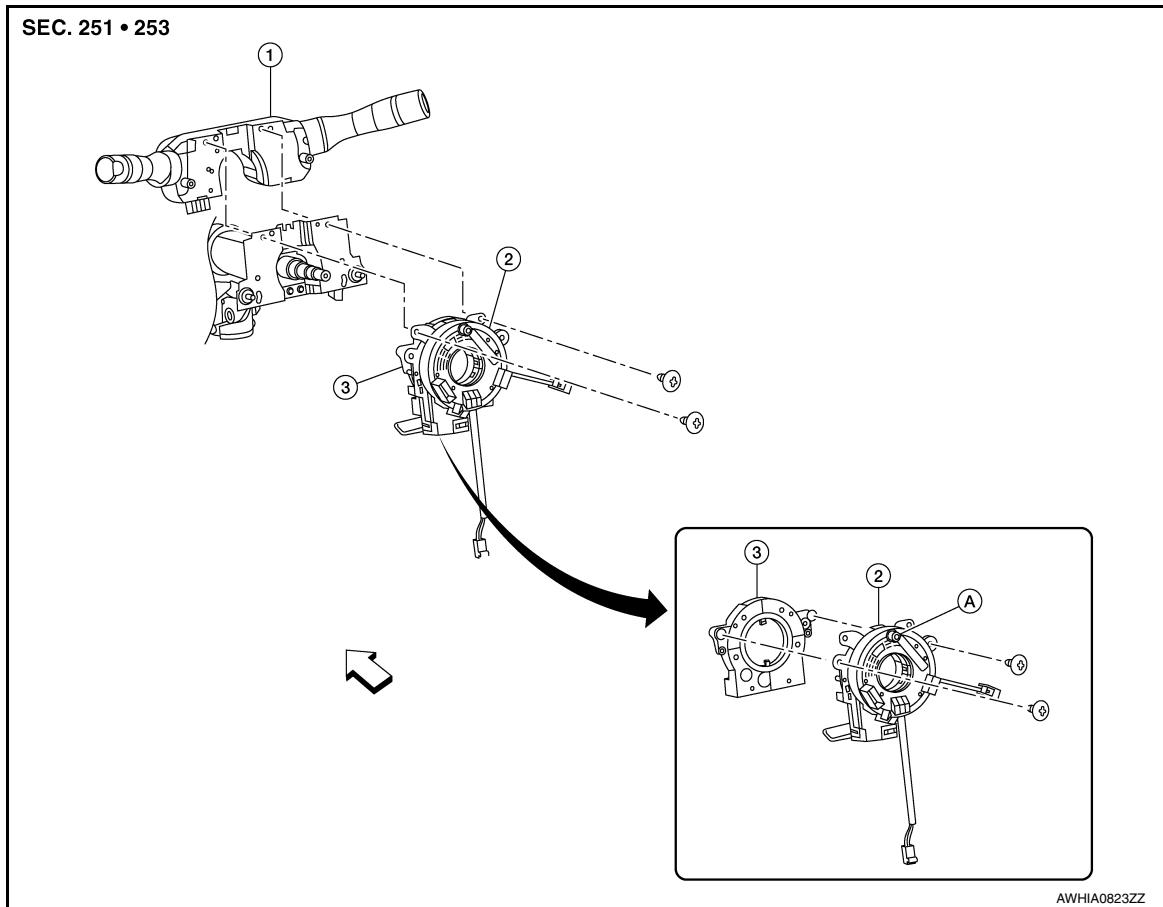
SPIRAL CABLE

< REMOVAL AND INSTALLATION >

SPIRAL CABLE

Exploded View

INFOID:000000012261582



1. Combination switch

2. Spiral cable

3. Steering angle sensor

A. Locating pin

⇐ Front

Removal and Installation

INFOID:000000011935645

WARNING:

- Before servicing the SRS, turn ignition switch OFF, disconnect both battery terminals then wait at least three minutes.
- Do not use air tools or electric tools for servicing.

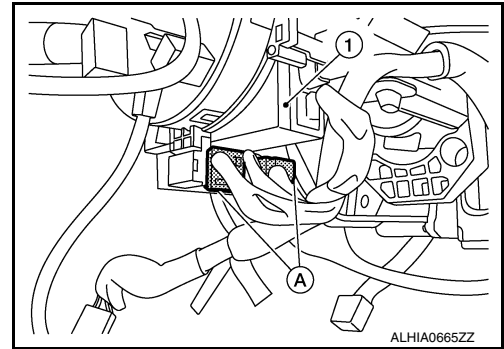
REMOVAL

1. Disconnect the negative and positive battery terminals, then wait at least 3 minutes. Refer to [PG-101, "Removal and Installation \(Battery\)"](#).
2. Remove the steering wheel. Refer to [ST-30, "Removal and Installation"](#).
3. Remove the steering column covers. Refer to [IP-18, "Removal and Installation - Electric steering column without paddle shifter"](#), [IP-18, "Removal and Installation - Mechanical steering column with paddle shifter"](#), or [IP-19, "Removal and Installation - Mechanical steering column without paddle shifter"](#).


SPIRAL CABLE

< REMOVAL AND INSTALLATION >

4. Disconnect the harness connectors (A) from spiral cable (1).

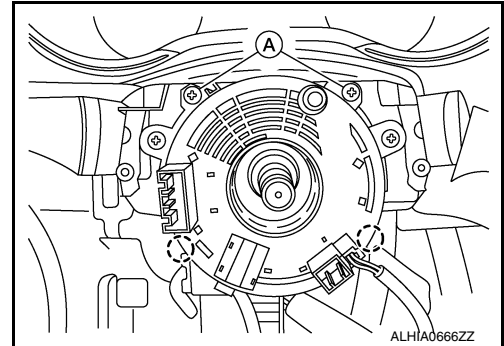


5. Remove the screws (A) and release pawls, then remove spiral cable and steering angle sensor as an assembly from the steering column.


 : Pawl

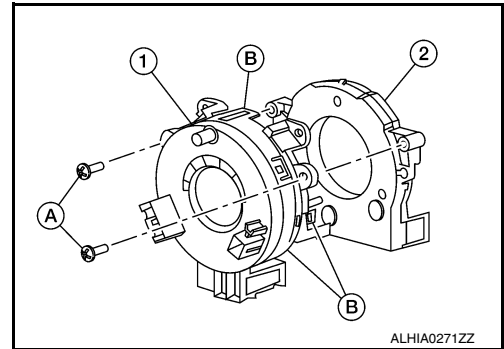
CAUTION:

Do not turn the spiral cable quickly or beyond the limit number of turns (approximately 2.5 turns from the neutral position), this may cause the cable to snap.



6. Remove screws (A) then release pawls (B) and separate steering angle sensor (2) from spiral cable (1).

 : Pawl



CAUTION:

- Do not strike or drop the spiral cable or steering angle sensor.
- Replace the spiral cable or steering angle sensor if it has been dropped or sustained an impact.
- Do not disassemble the spiral cable or steering angle sensor.
- Do not allow oil, grease, detergent or water to come in contact with the spiral cable or steering angle sensor.



INSTALLATION

Installation is in the reverse order of removal.

- The turn signal lever must be in the neutral position for spiral cable installation.

A
B
C
D
E
F
G
SR
I
J
K
L
M
N
O
P

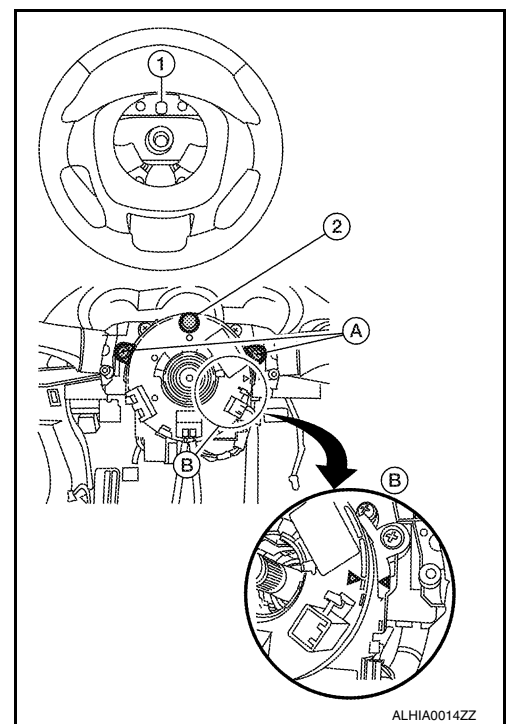
SPIRAL CABLE

< REMOVAL AND INSTALLATION >

- Set the spiral cable neutral position by carefully turning the spiral cable clockwise to the end position. Turn the spiral cable counter-clockwise 2.5 turns stopping when the locating pin (1) is at the top most position, the triangles (B) are pointing at each other as shown and the clear window appears white.

NOTE:

- If a new part is installed, the neutral position is already set with a lock pin in place and should not be adjusted after the stopper clip is removed. Make sure the lock pin is removed after the spiral cable/steering angle sensor assembly is installed but before the steering wheel is installed.
- During steering wheel installation, make sure the locating pin hole (1) is aligned with the locating pin (2) of the spiral cable.
- Perform the neutral position adjustment for the steering angle sensor. Refer to [SRC-38, "ADDITIONAL SERVICE WHEN REPLACING CONTROL UNIT : Special Repair Requirement"](#).
- Install screws (A) and spiral cable.



CAUTION:

- The spiral cable may snap during steering operation if the spiral cable is installed in an improper position.
- Do not overturn the spiral cable or go beyond the maximum number of turns allowed. This will cause the cable to snap.
- The turn signal lever must be in the neutral position for spiral cable installation.
- Do not apply lubricant to the spiral cable.
- Do not allow oil, grease, detergent or water to come in contact with the spiral cable.
- After installation is completed, check that no system malfunction is detected using CONSULT or the air bag warning lamp.
- If no malfunction is detected using CONSULT or the air bag warning lamp after repair or replacement of the malfunctioning parts, perform the SRS final check. Refer to [SRC-16, "SRS Final Check"](#).

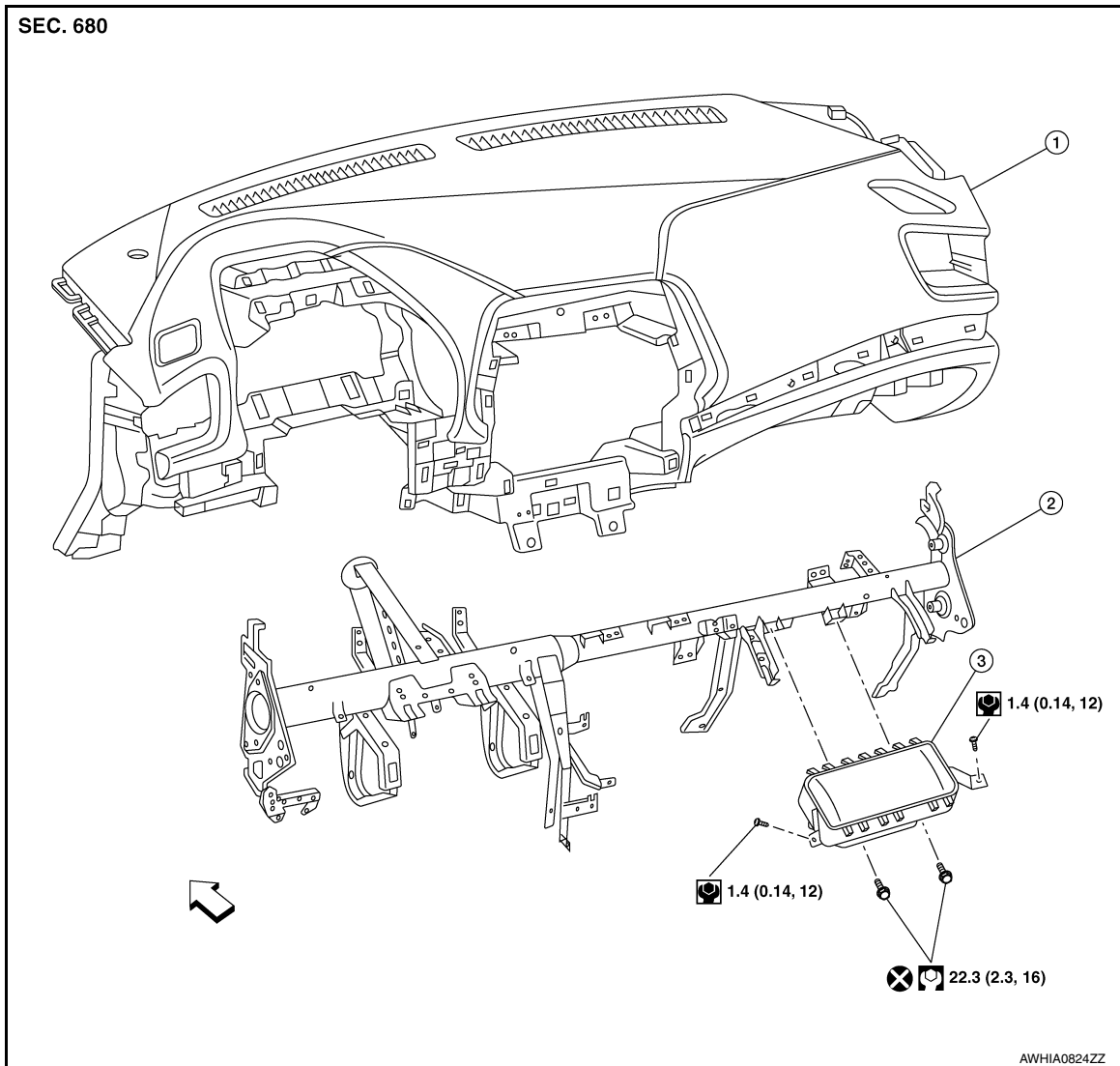
FRONT PASSENGER AIR BAG MODULE

< REMOVAL AND INSTALLATION >

FRONT PASSENGER AIR BAG MODULE

Exploded View

INFOID:000000012261588



1. Instrument panel assembly 2. Steering member assembly 3. Front passenger air bag module
↔ Front

Removal and Installation

INFOID:000000011935646

CAUTION:

- Before servicing, turn ignition switch OFF, disconnect both battery terminals and wait at least 3 minutes.
- Do not use air tools or electric tools for servicing.
- Always work from the side of air bag module. Do not work from the front of it.
- Always place air bag module with pad side facing upward.
- Do not cause impact to the air bag module by dropping etc. Replace the air bag module if it has been dropped or sustained an impact.

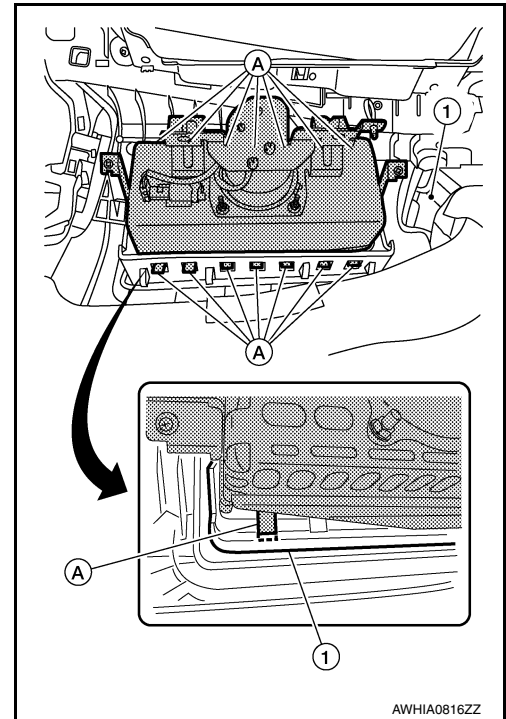
REMOVAL

1. Disconnect the negative and positive battery terminals, then wait at least 3 minutes. Refer to [PG-101, "Exploded View"](#).
2. Remove the instrument panel assembly. Refer to [IP-15, "Removal and Installation"](#).

FRONT PASSENGER AIR BAG MODULE

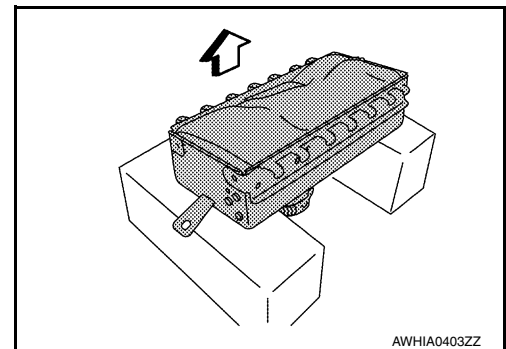
< REMOVAL AND INSTALLATION >

3. Remove the front passenger air bag module screws.
4. Disconnect harness connectors from the front passenger air bag module.
5. Release the upper and lower front passenger air bag module tabs (A) from instrument panel and pad assembly (1).
6. Rotate and lift the front passenger air bag module away from the instrument panel, then remove.



CAUTION:

- Always place front passenger air bag module with pad side facing upward as shown.
⇐: Upward



- Replace front passenger air bag module if it has been dropped or sustained an impact.
- Do not strike front passenger air bag module.



- Do not insert any foreign objects (screwdriver, etc.) into front passenger air bag module.
- Do not disassemble front passenger air bag module.
- Do not expose front passenger air bag module to temperatures exceeding 90 °C (194 °F).
- Do not allow oil, grease, detergent, or water to come in contact with front passenger air bag module.

INSTALLATION

FRONT PASSENGER AIR BAG MODULE

< REMOVAL AND INSTALLATION >

Installation is in the reverse order of removal.

CAUTION:

- Do not reuse front passenger air bag module bolts.
- Do not damage front passenger air bag module harness during installation.
- After installation is complete, check that no system malfunction is detected causing the air bag warning lamp to illuminate.
- If a malfunction is indicated by the air bag warning lamp after repair or replacement of the malfunctioning parts, perform the SRS final check. Refer to [SRC-16, "SRS Final Check"](#).

A

B

C

D

E

F

G

SR

I

J

K

L

M

N

O

P

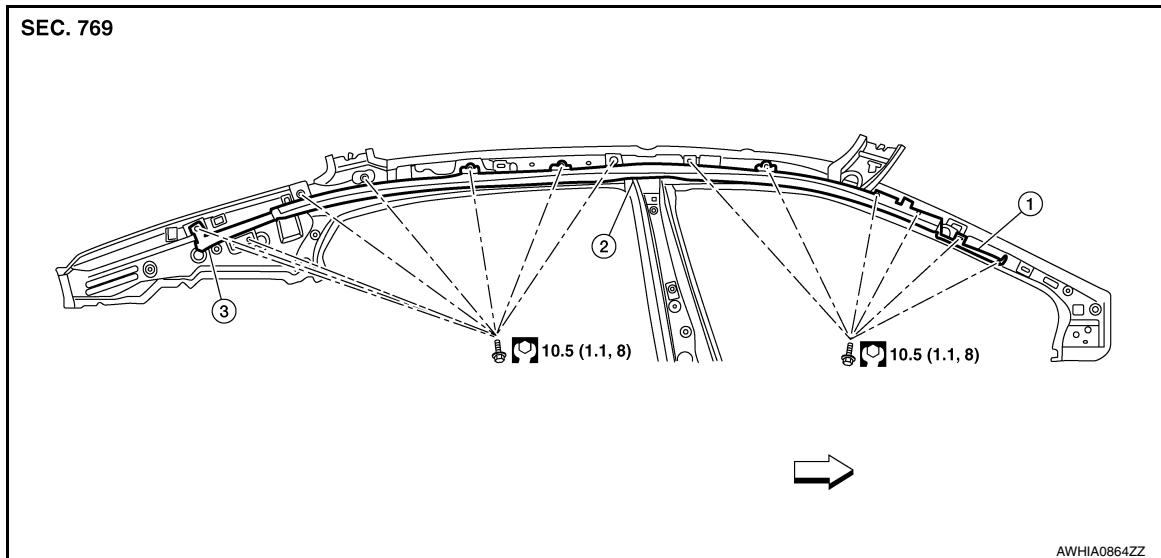
SIDE CURTAIN AIR BAG MODULE

< REMOVAL AND INSTALLATION >

SIDE CURTAIN AIR BAG MODULE

Explode View

INFOID:000000011935647



1. Side curtain air bag module tether 2. Side curtain air bag module assembly 3. Side curtain air bag module inflator

⇐ Front

Removal and Installation

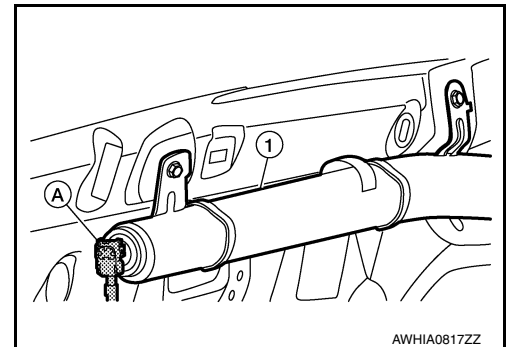
INFOID:000000011935648

CAUTION:

- Before servicing, turn ignition switch OFF, disconnect both battery terminals and wait at least 3 minutes.
- Do not use air tools or electric tools for servicing.
- Always work from the side of air bag module. Do not work from the front of it.
- Always place the curtain air bag module with air bag deployment side facing upward.
- Do not attempt to disassemble side curtain air bag module.

REMOVAL

1. Disconnect the negative and positive battery terminals, then wait at least 3 minutes. Refer to [PG-101, "Exploded View"](#).
2. Remove the headlining. Refer to [INT-48, "Removal and Installation"](#).
3. Disconnect the harness connector (A) from the side curtain air bag module inflator (1).



CAUTION:

- For removing/installing side curtain air bag module harness connector, insert a thin screwdriver wrapped in tape into notch, lift the lock and remove harness connector as shown.
 - Install harness connector with lock raised, and push lock into harness connector as shown.
 - After installing harness connector, check that the lock is pushed in securely.
4. Remove side curtain air bag module bolts.

SIDE CURTAIN AIR BAG MODULE

< REMOVAL AND INSTALLATION >

5. Disconnect side curtain air bag module bracket supporting hooks and remove side curtain air bag module.

CAUTION:

- Replace side curtain air bag module if it has been dropped or sustained an impact.
- Do not strike side curtain air bag module.
- Do not insert any foreign objects (screwdriver, etc.) into side curtain air bag module.
- Do not disassemble side curtain air bag module.
- Do not expose side curtain air bag module to temperatures exceeding 90°C (194°F).
- Do not allow oil, grease, detergent or water to come in contact with side curtain air bag module.

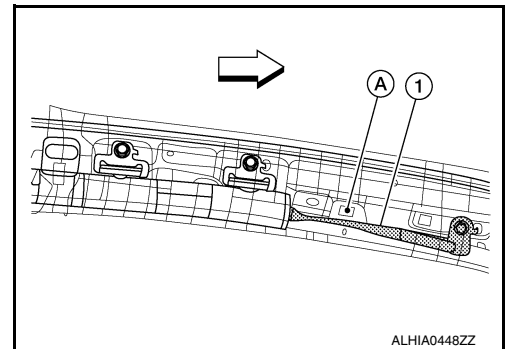
INSTALLATION

Installation is in the reverse order of removal.

CAUTION:

- Do not damage harness while installing side curtain air bag module.
- Verify harness connector is securely engaged and locked, black locking clip must be flush with the back of the harness connector.
- Make sure side curtain air bag module brackets are installed flat against the body panel.
- Make sure that the side curtain air bag module bracket supporting hooks are securely seated into the body slots before releasing side curtain air bag module during installation to avoid damaging side curtain air bag module.
- Make sure that the anti-twist stripe (red for RH side, blue for LH side) is visible along entire length of side curtain air bag module.
- Make sure side curtain air bag module front strap (1) is routed below front pillar finisher attachment point (A) as shown.

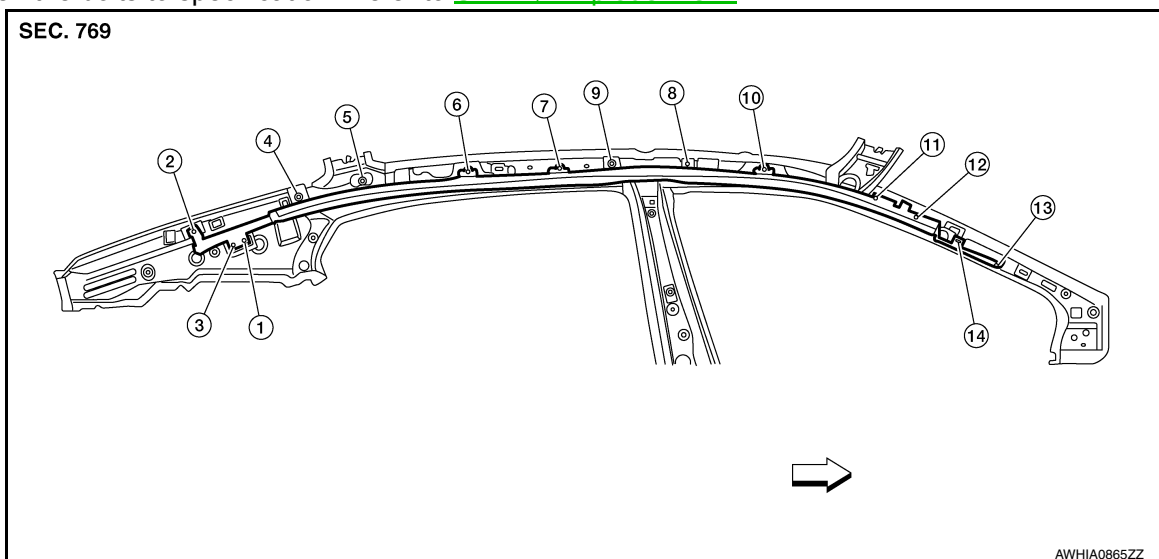
⇐: Front



- After installation is complete, check that no system malfunction is detected causing air bag warning lamp to illuminate.
- If a malfunction is indicated by air bag warning lamp after repair or replacement of malfunctioning parts, perform SRS final check. Refer to [SRC-16. "SRS Final Check"](#).

NOTE:

- When installing the side curtain air bag module, tighten the bolts in the order shown.
- Tighten the bolts to specification. Refer to [SR-22. "Explode View"](#).



SIDE AIR BAG MODULE

< REMOVAL AND INSTALLATION >

SIDE AIR BAG MODULE

Removal and Installation

INFOID:000000011935649

The front side air bag module is part of the front seatback. For removal and installation of the front seatback, refer to [SE-79, "Removal and Installation"](#).

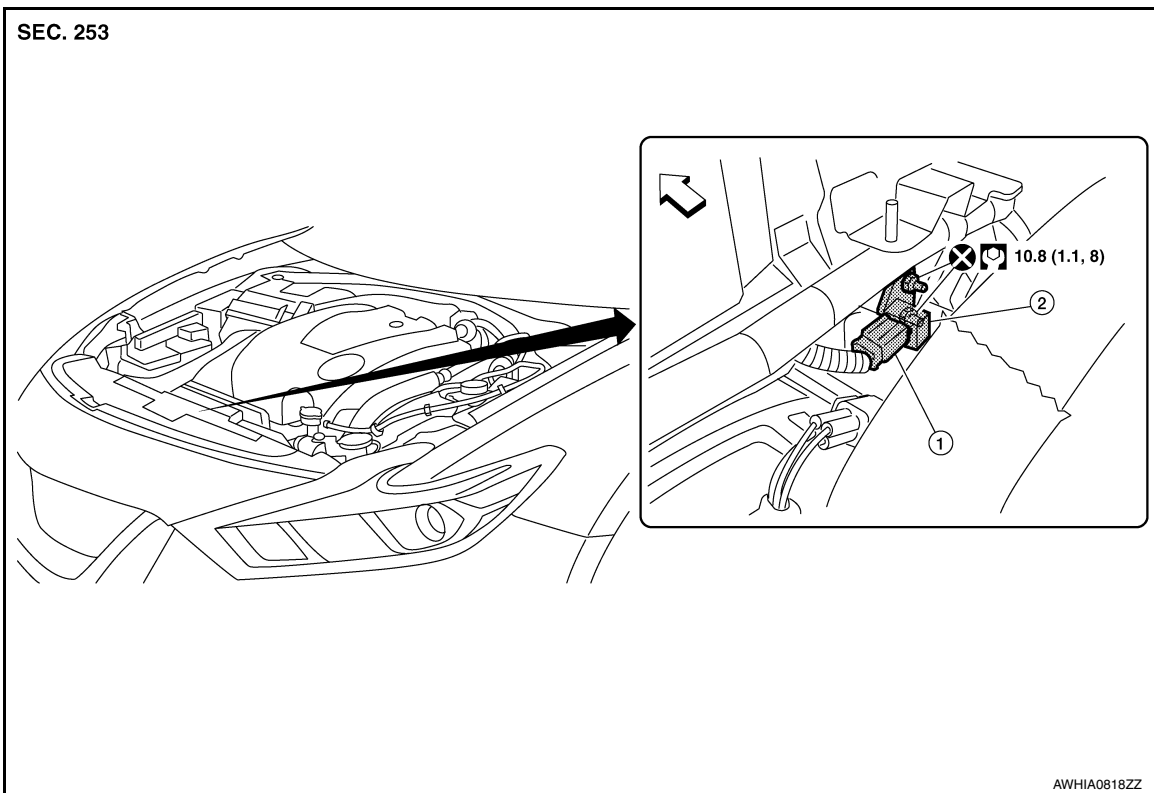
CRASH ZONE SENSOR

< REMOVAL AND INSTALLATION >

CRASH ZONE SENSOR

Explode View

INFOID:0000000011935650



1. Crash zone sensor harness connector

2. Crash zone sensor

← Front

Removal and Installation

INFOID:0000000011935651

WARNING:

- Before servicing SRS, turn ignition switch OFF, disconnect both battery terminals then wait at least three minutes.
- Do not use air tools or electric tools for servicing.

REMOVAL

1. Disconnect the negative and positive battery terminals, then wait at least 3 minutes. Refer to [PG-101](#), "[Exploded View](#)".
2. Remove the front air duct, then position upper radiator hose aside.
3. Disconnect the harness connector from the crash zone sensor.
CAUTION:
Do not damage harness connector.
4. Remove the nut, then remove crash zone sensor.
CAUTION:
 - Replace crash zone sensor if it has been dropped or sustained an impact.
 - Do not strike crash zone sensor.
 - Replace crash zone sensor if either driver air bag or front passenger air bag has been deployed.
 - Do not reuse crash zone sensor nut.

INSTALLATION

Installation is in the reverse order of removal.

CAUTION:

- Do not reuse crash zone sensor bolt.
- Do not damage harness connector during installation.

CRASH ZONE SENSOR

< REMOVAL AND INSTALLATION >

- After installation is complete, check that no system malfunction is detected causing air bag warning lamp to illuminate.
- If a malfunction is indicated by air bag warning lamp after repair or replacement of malfunctioning parts, perform SRS final check. Refer to [SRC-16, "SRS Final Check"](#).

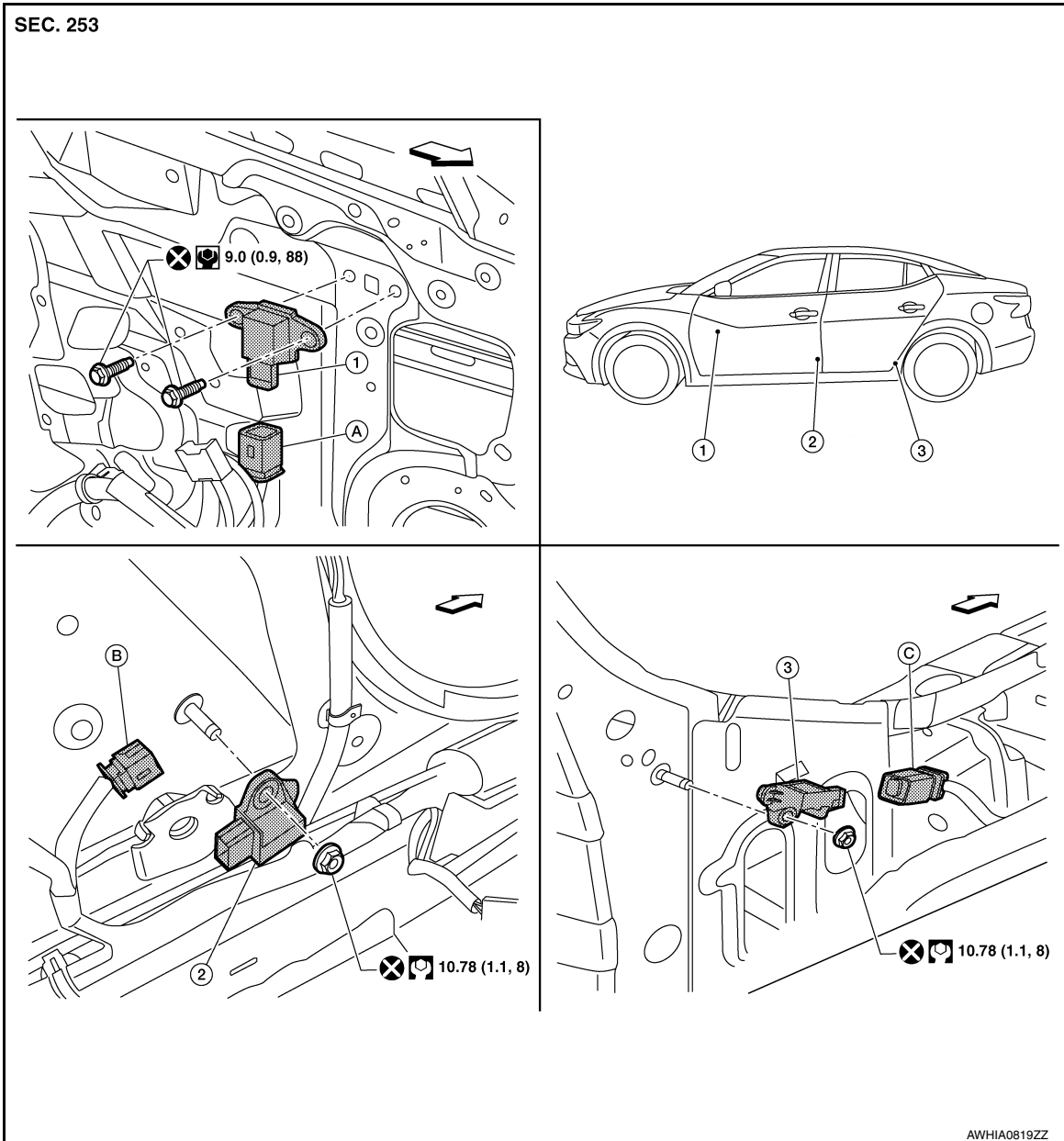
SIDE AIR BAG (SATELLITE) SENSOR

< REMOVAL AND INSTALLATION >

SIDE AIR BAG (SATELLITE) SENSOR

Exploded View

INFOID:000000012261581



- | | | |
|--|--|---|
| 1. Front door (satellite) sensor (if equipped) | 2. Front side air bag (satellite) sensor | 3. Rear side air bag (satellite) sensor |
| A. Front door (satellite) sensor harness connector (if equipped) | B. Front side air bag (satellite) sensor harness connector | C. Rear side air bag (satellite) sensor harness connector |

← Front

Removal and Installation

INFOID:000000011935652

WARNING:

- Before servicing SRS, turn ignition switch OFF, disconnect both battery terminals then wait at least three minutes.
- Do not use air tools or electric tools for servicing.

A
B
C
D
E
F
G
SR
I
J
K
L
M
N
O
P

SIDE AIR BAG (SATELLITE) SENSOR

< REMOVAL AND INSTALLATION >

FRONT SIDE AIR BAG SATELLITE SENSOR

Removal

1. Disconnect negative and positive battery terminals then wait at least 3 minutes. Refer to [PG-101, "Exploded View"](#).
2. Remove front seat belt retractor. Refer to [SB-8, "SEAT BELT RETRACTOR : Removal and Installation"](#).
3. Remove front side air bag satellite sensor nut.
CAUTION:
Do not reuse front side air bag satellite sensor nut.
4. Disconnect harness connector from front side air bag satellite sensor.
5. Remove front side air bag satellite sensor.
CAUTION:
 - Replace front side air bag satellite sensor if it has been dropped or sustained an impact.
 - Do not strike front side air bag satellite sensor.

Installation

Installation is in the reverse order of removal.

CAUTION:

- Do not allow foreign materials to come in contact with harness connector terminals.
- Position front side air bag satellite sensor using pawl, make sure front side air bag satellite sensor is flat against vehicle body before tightening nut to specification.
- Do not reuse front side air bag satellite sensor nut.
- Do not damage harness connector during installation.
- After installation is complete, check that no system malfunction is detected causing air bag warning lamp to illuminate.
- If a malfunction is indicated by air bag warning lamp after repair or replacement of malfunctioning parts, perform SRS final check. Refer to [SRC-16, "SRS Final Check"](#).

REAR SIDE AIR BAG SATELLITE SENSOR

Removal

1. Disconnect negative and positive battery terminals then wait at least 3 minutes. Refer to [PG-101, "Exploded View"](#).
2. Remove rear kicking plate inner. Refer to [INT-34, "REAR KICKING PLATE : Removal and Installation - Inner"](#).
3. Remove rear side air bag satellite sensor nut.
CAUTION:
Do not reuse rear side air bag satellite sensor nut.
4. Disconnect harness connector from rear side air bag satellite sensor.
5. Remove rear side air bag satellite sensor.
CAUTION:
 - Replace rear side air bag satellite sensor if it has been dropped or sustained an impact.
 - Do not strike rear side air bag satellite sensor.

Installation

Installation is in the reverse order of removal.

CAUTION:

- Position rear side air bag satellite sensor using pawl, make sure rear side air bag satellite sensor is flat against vehicle body before tightening bolt to specification.
- Do not allow foreign materials to come in contact with harness connector terminals.
- Do not reuse rear side air bag satellite sensor nut.
- Do not damage harness connector during installation.
- After installation is complete, check that no system malfunction is detected causing air bag warning lamp to illuminate.
- If a malfunction is indicated by air bag warning lamp after repair or replacement of malfunctioning parts, perform SRS final check. Refer to [SRC-16, "SRS Final Check"](#).

FRONT DOOR SATELLITE SENSOR

Removal

SIDE AIR BAG (SATELLITE) SENSOR

< REMOVAL AND INSTALLATION >

1. Disconnect negative and positive battery terminals then wait at least 3 minutes. Refer to [PG-101, "Exploded View"](#). A
2. Remove front door finisher. Refer to [INT-27, "Removal and Installation"](#).
3. Remove front door satellite sensor bolts. B
CAUTION:
Do not reuse front door satellite sensor bolts.
4. Disconnect harness connector from front door satellite sensor.
5. Remove front door satellite sensor. C
CAUTION:
 - **Replace front door satellite sensor if it has been dropped or sustained an impact.**
 - **Do not strike front door satellite sensor.** D

Installation

Installation is in the reverse order of removal.

- CAUTION:** E
- **Position front door satellite sensor using pawl, make sure front door satellite sensor is flat against vehicle body before tightening bolts to specification.**
 - **Do not allow foreign materials to come in contact with harness connector terminals.**
 - **Do not reuse front door satellite sensor bolts.** F
 - **Do not damage harness connector during installation.**
 - **After installation is complete, check that no system malfunction is detected causing air bag warning lamp to illuminate.** G
 - **If a malfunction is indicated by air bag warning lamp after repair or replacement of malfunctioning parts, perform SRS final check. Refer to [SRC-16, "SRS Final Check"](#).**

SR

I

J

K

L

M

N

O

P

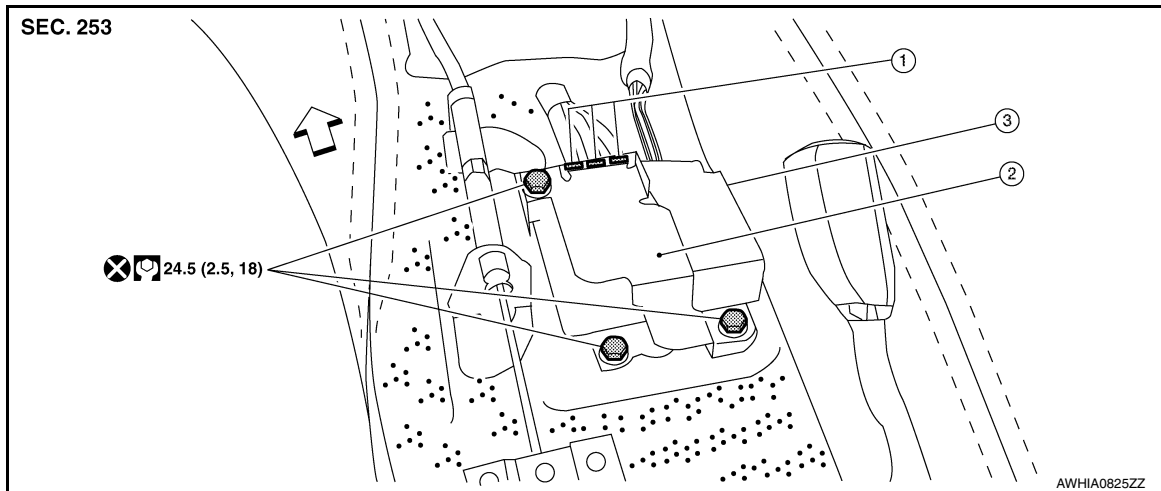
DIAGNOSIS SENSOR UNIT

< REMOVAL AND INSTALLATION >

DIAGNOSIS SENSOR UNIT

Exploded View

INFOID:000000012261583



1. Diagnosis sensor unit harness connectors 2. Diagnosis sensor unit shield 3. Diagnosis sensor unit

↶ Front

Removal and Installation

INFOID:000000011935653

WARNING:

- Before servicing SRS, turn ignition switch OFF, disconnect both battery terminals then wait at least 3 minutes.
- Before disconnecting air bag diagnosis sensor unit harness connectors, be sure to disconnect each harness connector of side curtain air bag modules, front seat belt pre-tensioner, and front side air bag module, to prevent accidental air bag deployment by static electricity and seat belt pre-tensioner operation.
- Do not use air tools or electric tools for servicing.
- When replacing air bag diagnosis sensor unit, always check with parts department for latest parts information. Installing an incorrect air bag diagnosis sensor unit may or may not cause air bag warning lamp to illuminate and may cause incorrect deployment of supplemental air bags and seat belt pre-tensioners in a collision resulting in serious personal injury or death.

REMOVAL

CAUTION:

Before replacing air bag diagnosis sensor unit, perform "Before Replace ECU" of "Read / Write Configuration" to save or print current vehicle specification. Refer to [SRC-38, "ADDITIONAL SERVICE WHEN REPLACING CONTROL UNIT : Description"](#).

1. Always check the air bag diagnosis sensor unit ECU discriminated number (identification number) or part number using CONSULT.
2. Disconnect the negative and positive battery terminals, then wait at least 3 minutes. Refer to [PG-101, "Exploded View"](#).
3. Disconnect the harness connectors for each of the following SRS components. Refer to [SR-22, "Removal and Installation"](#) (Side curtain air bag module), [SE-79, "Removal and Installation"](#) (Side air bag module) and [SB-8, "SEAT BELT RETRACTOR : Removal and Installation"](#) (Seat belt pre-tensioner).
4. Remove the center console. Refer to [IP-20, "Removal and Installation"](#).
5. Disconnect the harness connectors from the diagnosis sensor unit.
6. Remove the bolts, then remove the diagnosis sensor unit.

CAUTION:

- Do not reuse air bag diagnosis sensor unit bolts.

DIAGNOSIS SENSOR UNIT

< REMOVAL AND INSTALLATION >

- Replace air bag diagnosis sensor unit if it has been dropped or sustained an impact.
- Do not strike air bag diagnosis sensor unit.



- Replace air bag diagnosis sensor unit if any SRS air bag has been deployed or if any front seat belt pre-tensioner has been deployed.

INSTALLATION

CAUTION:

Be sure to perform "After Replace ECU" of "Read / Write Configuration" or "Manual Configuration" when replacing air bag diagnosis sensor unit. Refer to [SRC-39, "CONFIGURATION : Work Procedure"](#). Installation is in the reverse order of removal.

CAUTION:

- Do not reuse air bag diagnosis sensor unit bolts.
- The air bag diagnosis sensor unit must always be installed with label arrow mark "←" pointing toward front of vehicle for proper operation.
- Do not damage air bag diagnosis sensor unit harness connectors during installation.
- After installation is complete, check that no system malfunction is detected causing air bag warning lamp to illuminate.
- If a malfunction is indicated by air bag warning lamp after repair or replacement of malfunctioning parts, perform SRS final check. Refer to [SRC-16, "SRS Final Check"](#).
- After replacing air bag diagnosis sensor unit, confirm using CONSULT that ECU discriminated number (identification number) or part number of new replacement air bag diagnosis sensor unit matches ECU discriminated number (identification number) or part number of replaced (old) air bag diagnosis sensor unit.

NOTE:

If ECU discriminated number or part number of new replacement air bag diagnosis sensor unit differs from ECU discriminated number or part number of replaced air bag diagnosis sensor unit, reconfirm parts information and verify that the correct air bag diagnosis sensor unit was installed.

SEAT BELT PRE-TENSIONER

< REMOVAL AND INSTALLATION >

SEAT BELT PRE-TENSIONER

Removal and Installation

INFOID:000000012269756

For removal and installation procedures, refer to [SB-8, "SEAT BELT RETRACTOR : Removal and Installation"](#).

FRONT SEAT BELT BUCKLE SWITCH

< REMOVAL AND INSTALLATION >

FRONT SEAT BELT BUCKLE SWITCH

Removal and Installation

INFOID:000000012269757

The front seat belt buckle switch is part of the front seat belt buckle. For removal and installation of the front seat belt buckle, refer to [SB-10. "FRONT SEAT BELT BUCKLE : Removal and Installation"](#).

A
B
C
D
E
F
G
SR
I
J
K
L
M
N
O
P

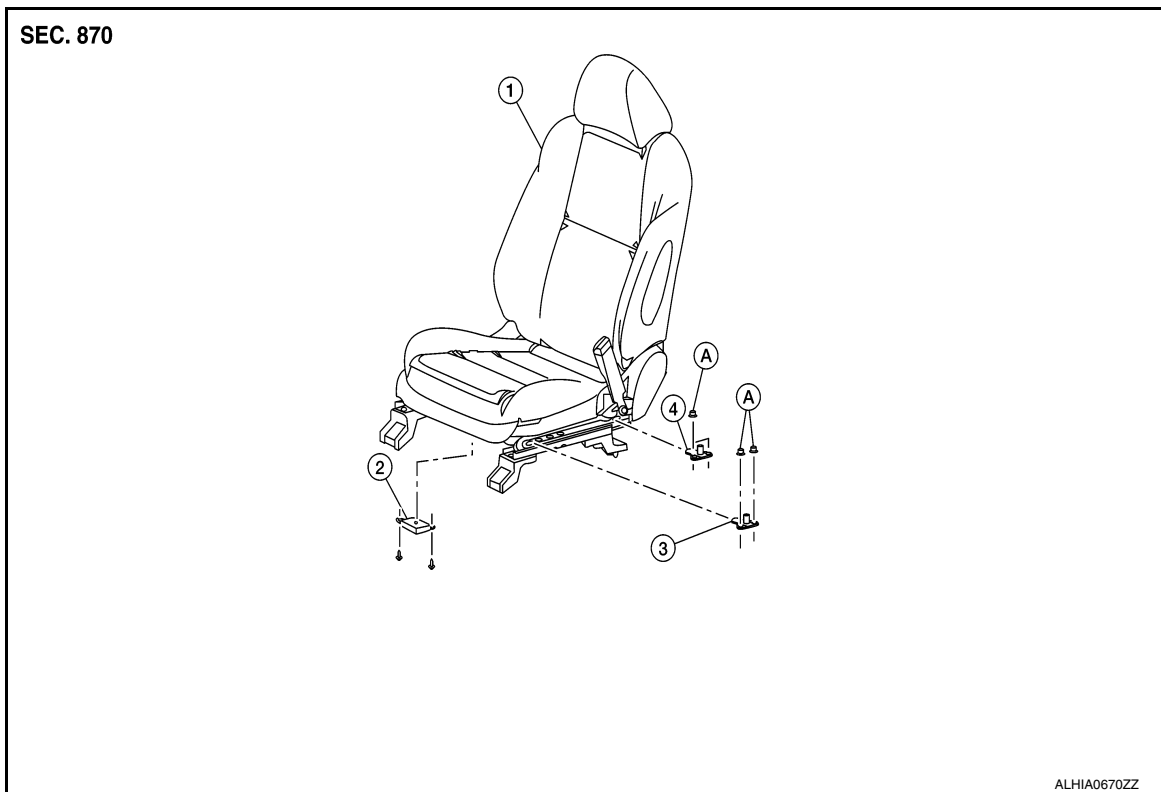
OCCUPANT CLASSIFICATION SYSTEM

< REMOVAL AND INSTALLATION >

OCCUPANT CLASSIFICATION SYSTEM

Exploded View

INFOID:000000012261585



- | | | |
|---|--|--|
| 1. Front passenger seat | 2. Occupant classification system control unit | 3. Occupant classification system sensor (front) |
| 4. Occupant classification system sensor (rear) | A. Refer to INSTALLATION | |

Removal and Installation - Control Unit

INFOID:000000011935654

OCCUPANT CLASSIFICATION SYSTEM CONTROL UNIT

WARNING:

- When working near the Airbag Diagnosis Sensor Unit or other Airbag System sensors with the Ignition ON or engine running, DO NOT use air or electric power tools or strike near the sensor(s) with a hammer. Heavy vibration could activate the sensor(s) and deploy the air bag(s), possibly causing serious injury.
- Before servicing SRS, turn ignition switch OFF, disconnect both battery terminals then wait at least 3 minutes.

CAUTION:

- When working with the metal seat frame, use caution to avoid injury from sharp edges.
- When removing or installing the seat, use shop cloths to protect components from damage.
- When disconnecting or connecting the harness and harness connectors, handle them carefully to avoid damage.

Removal

1. Slide front passenger seat to full forward position.
2. Remove occupant classification system control unit bolts.
3. Disconnect harness connector from occupant classification system control unit.
4. Remove occupant classification system control unit.

CAUTION:

- Replace occupant classification control unit if it has been dropped or sustained an impact.

OCCUPANT CLASSIFICATION SYSTEM

< REMOVAL AND INSTALLATION >

- Do not strike occupant classification control unit.

Installation

Installation is in the reverse order of removal.

WARNING:

- After installation is complete, perform additional services (Zero point reset) when replacing control unit. Refer to [SRC-39, "ZERO POINT RESET : Special Repair Requirement"](#).
- Zero point reset must be performed every time the occupant classification system control unit is removed or replaced.
- Zero point reset is done after the front passenger seat is installed in vehicle and all nuts and bolts are tightened to specification.

CAUTION:

- After installation is complete, check that no system malfunction is detected causing the air bag warning lamp to illuminate.
- If a malfunction is indicated by the air bag warning lamp after repair or replacement of the malfunctioning parts, perform the SRS final check. Refer to [SRC-16, "SRS Final Check"](#).

Removal and Installation - Sensors

INFOID:0000000012271635

OCCUPANT CLASSIFICATION SYSTEM SENSORS

WARNING:


- When working near the Airbag Diagnosis Sensor Unit or other Airbag System sensors with the Ignition ON or engine running, DO NOT use air or electric power tools or strike near the sensor(s) with a hammer. Heavy vibration could activate the sensor(s) and deploy the air bag(s), possibly causing serious injury.
- Before servicing SRS, turn ignition switch OFF, disconnect both battery terminals then wait at least 3 minutes.

CAUTION:

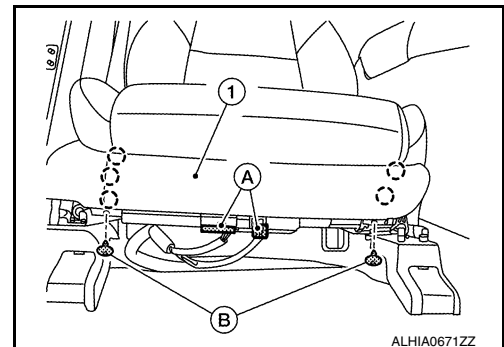
- When working with the metal seat frame, use caution to avoid injury from sharp edges.
- When removing or installing the seat trim, handle it carefully to keep dirt out and to avoid damage.
- When removing or installing the seat, use shop cloths to protect components from damage.
- When disconnecting or connecting the harness and harness connectors, handle them carefully to avoid damage.

Removal


1. Remove screws (B) and release pawls then remove the front passenger seat front finisher (1).

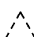
 : Pawl

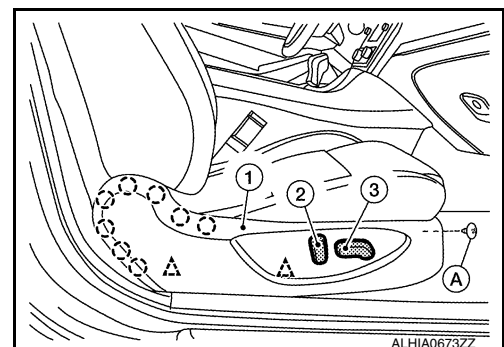
2. Disconnect the harness connectors (A) from the front passenger seat.



3. Remove the seat cushion outer finisher (RH) from the front passenger seat using the following procedure.
 - a. Using a suitable tool remove seat slide knob (3) and seat recline knob (2).
 - b. Remove screw (A), then release clips and pawls and remove seat cushion outer finisher [RH (1)].

 : Pawl

 : Clip

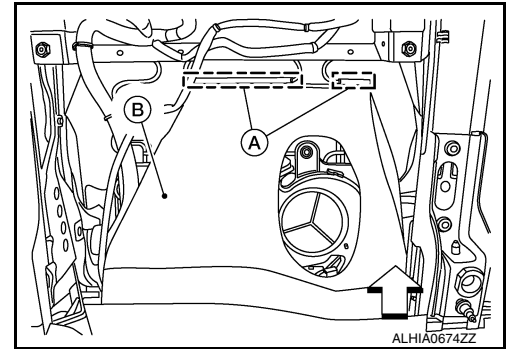


OCCUPANT CLASSIFICATION SYSTEM

< REMOVAL AND INSTALLATION >

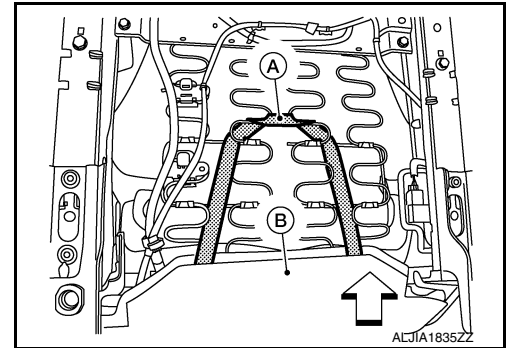
4. Position the seatback flap aside using the following procedure:
 - a. For vehicles with climate controlled seat, use the following step:
 - i. From under the rear of the front passenger seat, release the seatback J-hooks (A) and position seatback flap (B) aside.

↩ : Front

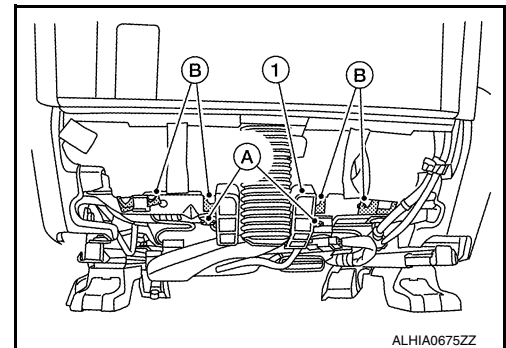


- b. For vehicles without climate controlled seats, use the following step:
 - i. From under the rear of the front passenger seat, release the seatback strap (A) and position seatback flap (B) aside.

↩ : Front

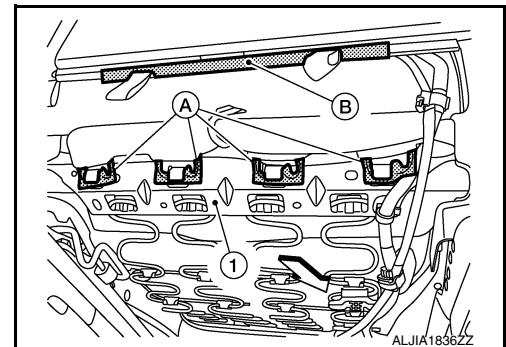


5. Remove the front passenger seat cushion assembly from the seat frame assembly using the following procedure:
 - a. Release the rear hinge cover J-hooks.
 - For models with climate controlled seat, release clips (A) then reposition seatback duct (1) and remove J-hooks (B).



- For models without climate controlled seat, release the rear hinge cover J-hooks (A) from the seat frame assembly (1).


↩ : Front

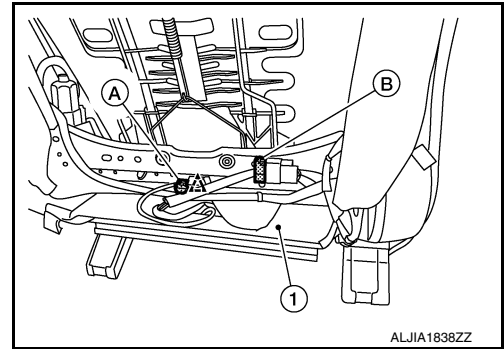


OCCUPANT CLASSIFICATION SYSTEM


< REMOVAL AND INSTALLATION >

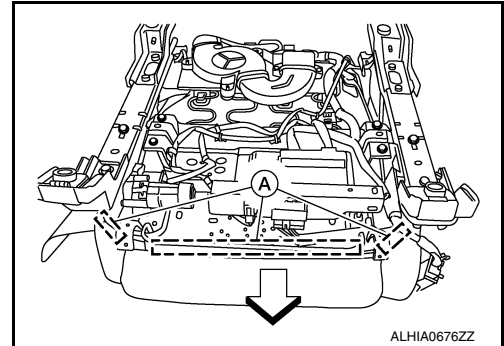
- b. For models with heated seats, disconnect the harness connector (A) from the seat cushion heater unit and harness connector (B) from the seatback heater unit, then release harness clip and route seat heater harnesses through the seat cushion trim (1).

 : Clip



- c. Release the seat cushion trim J-hooks (A) from the front of the seat frame assembly.

 : Front




- d. Release the seat cushion trim J-hook (B) from the LH (inboard) side of the seat frame assembly using suitable tool (A).

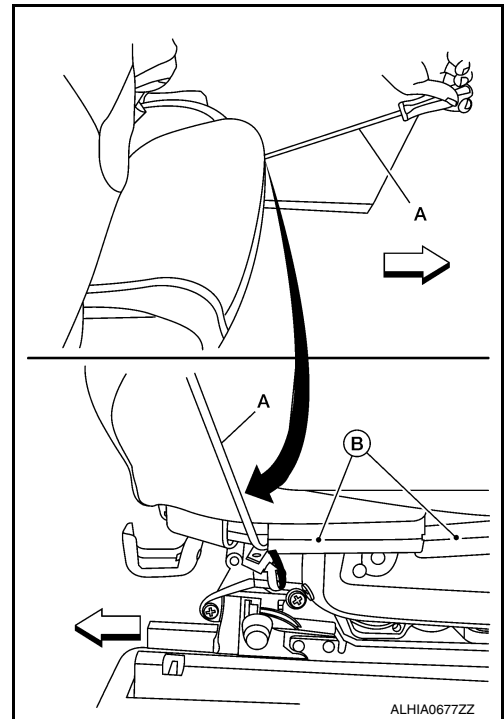
CAUTION:

Do not damage center console finishers or seat cushion trim.


NOTE:

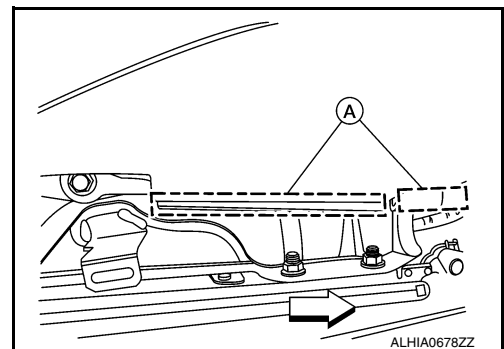
Push the J-hook (B) down and away from the seat frame assembly using suitable tool (A) as shown.

 : Front



- e. Release the seat cushion trim J-hook (A) from the RH (outboard) side of the seat frame assembly.

 : Front



- f. Remove the seat cushion assembly from the seat frame assembly.

A
B
C
D
E
F
G
SR
I
J
K
L
M
N
O
P

OCCUPANT CLASSIFICATION SYSTEM

< REMOVAL AND INSTALLATION >

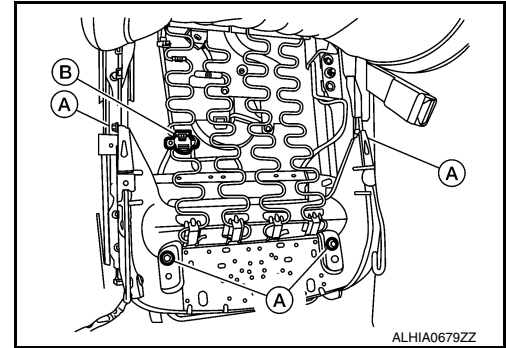
6. Position front passenger seat pan aside using the following procedure:

a. For models with climate controlled seats perform the following steps:

i. Remove front passenger seat pan bolts (A), then release harness clip (B).

NOTE:

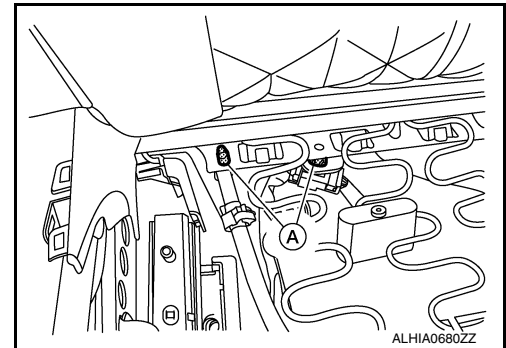
Note harness routing for ease of installation.



ii. Remove harness clips (A) from seat cushion frame.

NOTE:

Note harness routing for ease of installation.



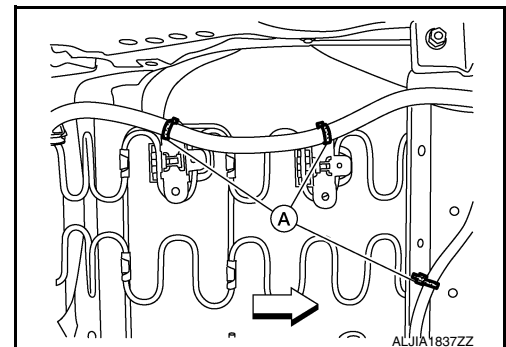
b. For models without climate controlled seats perform the following step:

i. Release harness clips (A) from seat cushion frame.

NOTE:

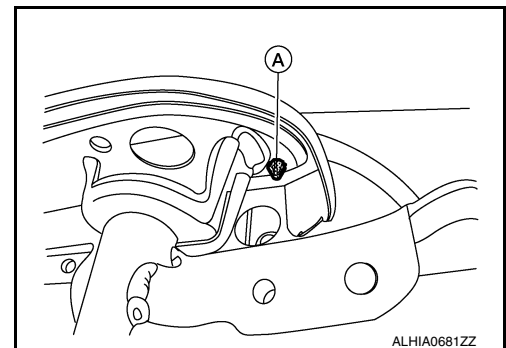
- Note harness routing for ease of installation.
- View shown from under the seat with seat cushion installed.

⇐ : Front



7. With the seat pan raised, perform the following steps:

a. Disconnect the harness connector from the front passenger seat belt buckle, then release harness clip (A).



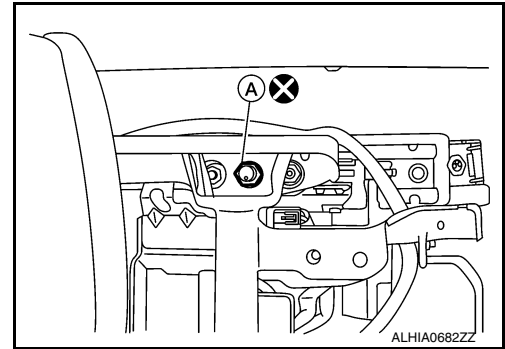
OCCUPANT CLASSIFICATION SYSTEM

< REMOVAL AND INSTALLATION >

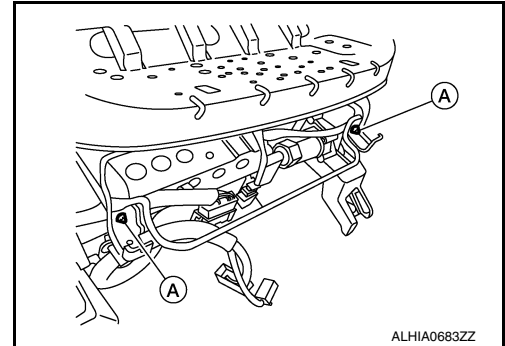
- b. Remove front LH seat frame nut (A).

CAUTION:

- Do not move the seat track while nut (A) is removed.
- Do not reuse nut (A).



8. Remove harness connectors clips (A) from the front passenger seat frame.



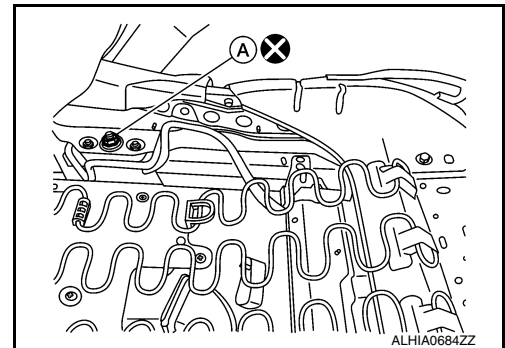
9. Remove the remaining seat frame assembly nuts from the seat tracks using the following procedure:

- a. Remove washer and nut (A) from the rear LH (inboard) side of the seat frame assembly.

CAUTION:

- Do not move the seat track while the nut (A) is removed.
- Do not reuse washer and nut (A).

← : Front

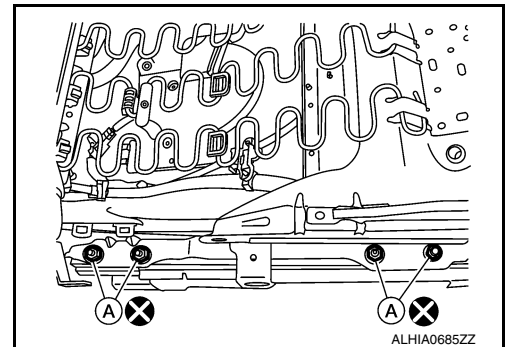


- b. Remove nuts (A) from the RH (outboard) side of the seat frame assembly.

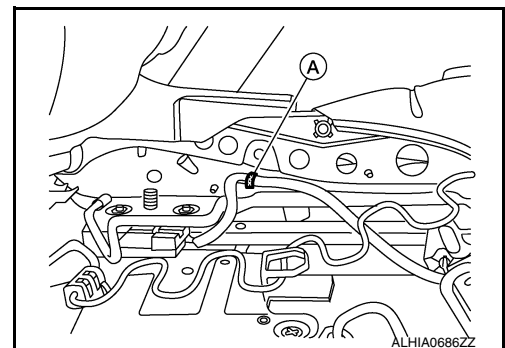
CAUTION:

- Do not move the seat track while nuts (A) are removed.
- Do not reuse nuts (A).

← : Front



10. Remove the harness connector clip (A) from the front passenger seat frame.



A
B
C
D
E
F
G
SR
I
J
K
L
M
N
O
P

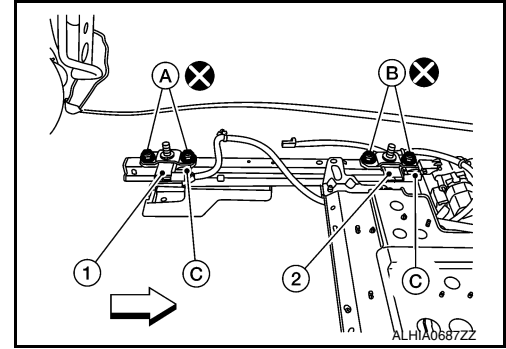
OCCUPANT CLASSIFICATION SYSTEM

< REMOVAL AND INSTALLATION >

11. Remove the front passenger seat frame assembly from the seat tracks and position to the rear.
12. Remove the occupant classification system sensors using the following procedure.

⇐ : Front

- a. Disconnect the harness connectors (C) from the occupant classification system sensors.
- b. Remove the rear occupant classification system sensor nuts (A).
CAUTION:
Do not reuse nuts (A)
- c. Remove the rear occupant classification system sensor (1).
- d. Remove the front occupant classification system sensor nuts (B).
CAUTION:
Do not reuse nuts (B)
- e. Remove the front occupant classification system sensor (2).



Installation

WARNING:

- After installation is complete, perform additional services (Zero point reset) when installing occupant classification system sensors. Refer to [SRC-39, "ZERO POINT RESET : Special Repair Requirement"](#).
- Zero point reset must be performed every time the front passenger seat is removed.
- Zero point reset is done after the front passenger seat is installed in vehicle and all nuts and bolts are tightened to specification.

CAUTION:

- Visually check the harness clips for deformation and damage during installation. Replace with new ones if necessary.
- After installation is complete, check that no system malfunction is detected causing the air bag warning lamp to illuminate.
- If a malfunction is indicated by the air bag warning lamp after repair or replacement of the malfunctioning parts, perform the SRS final check. Refer to [SRC-16, "SRS Final Check"](#).

1. Install the occupant classification system sensors using the following procedure.

- a. Install the rear occupant classification system sensor (1) and nuts (A) and tighten to specification.

CAUTION:
Do not reuse nuts (A).

⇐ : Front

Occupant classification system sensor nuts (A) : 22 N·m (2.2 kg-m, 16 ft-lb)

- b. Install the front occupant classification system sensor (2) and nuts (B) and tighten to specification.

CAUTION:
Do not reuse nuts (B).

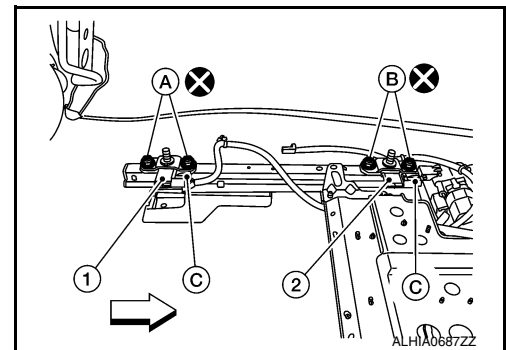
Occupant classification system sensor nuts (B) : 22 N·m (2.2 kg-m, 16 ft-lb)

- c. Connect the harness connectors (C) for the occupant classification system sensors.

2. Install the seat frame assembly onto the four studs.

CAUTION:
Make sure the seat frame assembly is installed correctly on all four studs.

3. Install the seat frame assembly nuts using the following procedure:



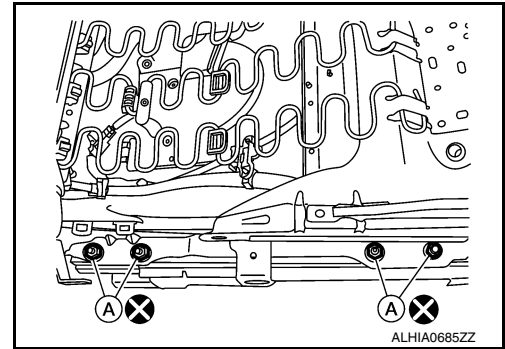
OCCUPANT CLASSIFICATION SYSTEM

< REMOVAL AND INSTALLATION >

- a. Install nuts (A) to the RH (outboard) side of the seat frame assembly and hand tighten.

CAUTION:

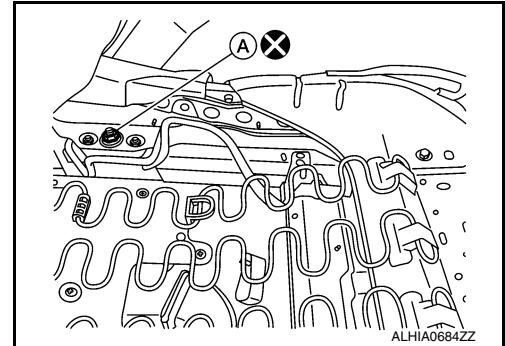
- Do not move the seat track while nuts (A) are removed.
- Do not reuse nuts (A).



- b. Install washer and nut (A) to the rear LH (inboard) side of the seat frame assembly and hand tighten.

CAUTION:

- Do not move the seat track while the nut (A) is removed.
- Do not reuse washer and nut (A).

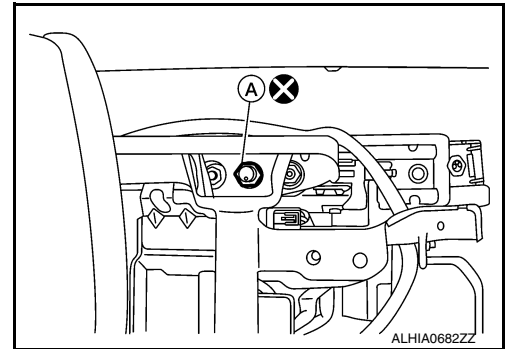


- c. Install nut (A) to the front LH (inboard) side of the seat frame assembly and tighten to specification.

CAUTION:

- Do not move the seat track while nut (A) is removed.
- Do not reuse nut (A).

**Seat frame assembly : 45 N·m (4.6 kg-m, 33 ft-lb)
nut (A)**

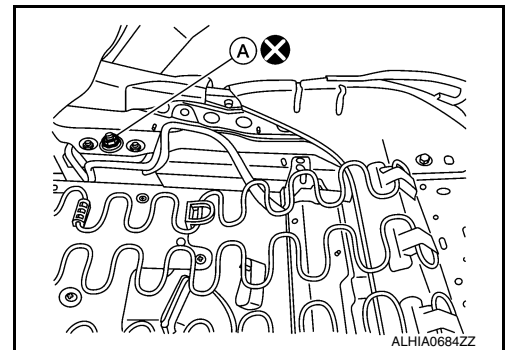


- d. Install washer and nut (A) to the rear LH (inboard) side of the seat frame assembly and tighten to specification.

CAUTION:

- Do not move the seat track while the nut (A) is removed.
- Do not reuse washer and nut (A).

**Seat frame assembly : 45 N·m (4.6 kg-m, 33 ft-lb)
nut (A)**

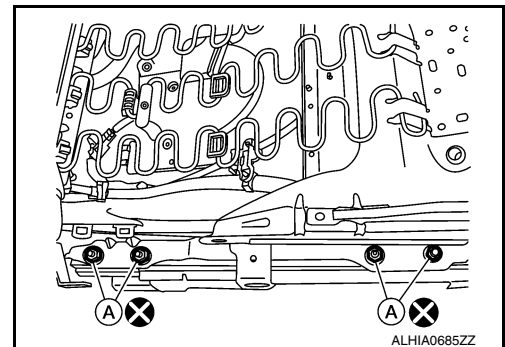


- e. Install nuts (A) to the RH (outboard) side of the seat frame assembly and tighten to specification.

CAUTION:

- Do not move the seat track while nuts (A) are removed.
- Do not reuse nuts (A).

**Seat frame assembly : 22 N·m (2.2 kg-m, 16 ft-lb)
nuts (A)**

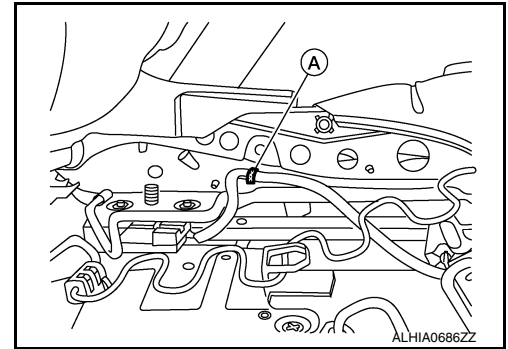


A
B
C
D
E
F
G
SR
I
J
K
L
M
N
O
P

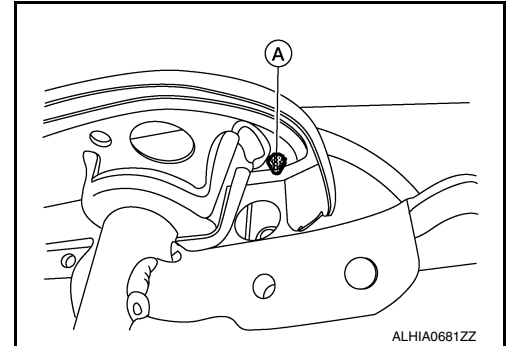
OCCUPANT CLASSIFICATION SYSTEM

< REMOVAL AND INSTALLATION >

4. Install the harness connector clip (A) from the front passenger seat frame.

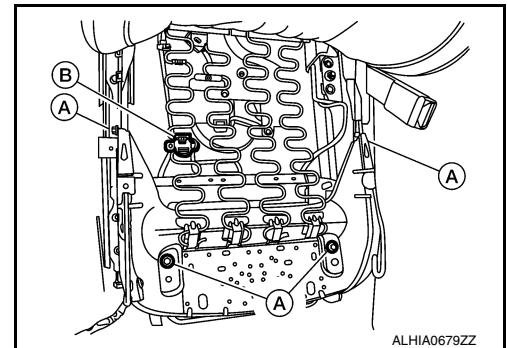


5. With the seat pan raised, connect the harness connector to the front passenger seat belt buckle, then install harness clip (A).

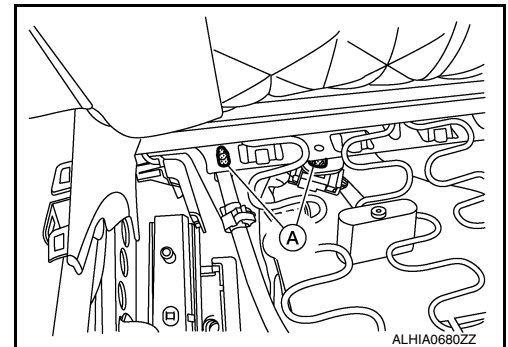


6. Install front passenger seat pan using the following procedure:
 - a. Install front passenger seat pan bolts (A) then install harness clip (B).

Seat pan bolts (B) : 22 N·m (2.2 kg-m, 16 ft-lb)



- b. Install harness clips (A) to the front passenger seat frame.



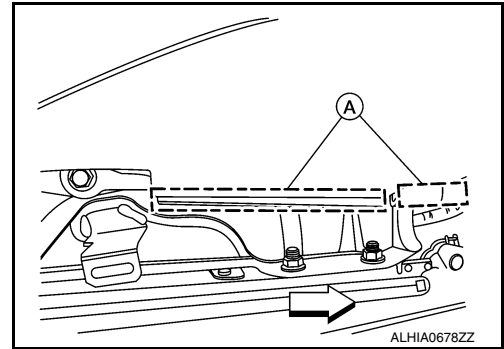
7. Install the front passenger seat cushion assembly to the seat frame assembly using the following procedure.

OCCUPANT CLASSIFICATION SYSTEM

< REMOVAL AND INSTALLATION >

- a. Install the seat cushion trim J-hook (A) to the RH (outboard) side of the seat frame assembly.

↶ : Front



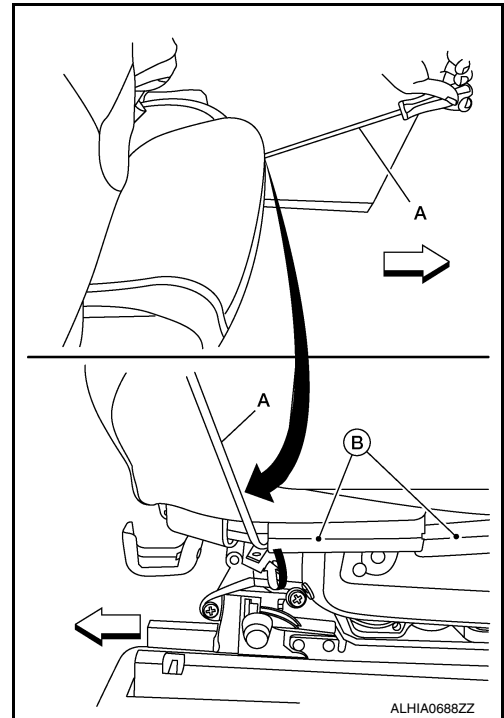
- b. Install the seat cushion trim J-hook (B) to the LH (inboard) side of the seat frame assembly using suitable tool (A).

CAUTION:

Do not damage center console finishers or seat cushion trim.

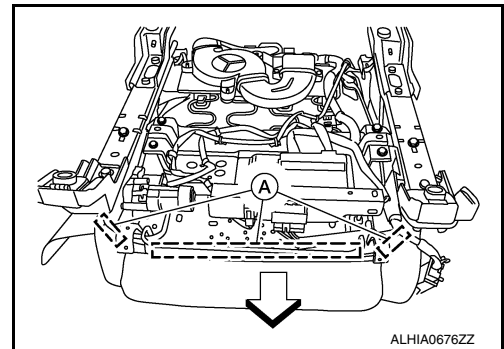
NOTE:

Push the J-hook (B) down and away from the seat frame assembly using suitable tool (A) as shown.

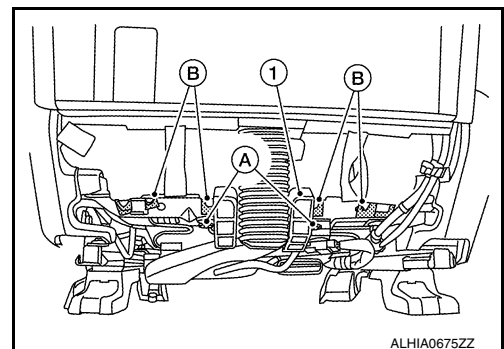


- c. Install the seat cushion trim J-hooks (A) to the front of the seat frame assembly.

↶ : Front



- d. Install the rear hinge cover J-hooks.
 • For models with climate controlled passenger seat, install J-hooks (B), then install the seatback duct (1) using clips (A).



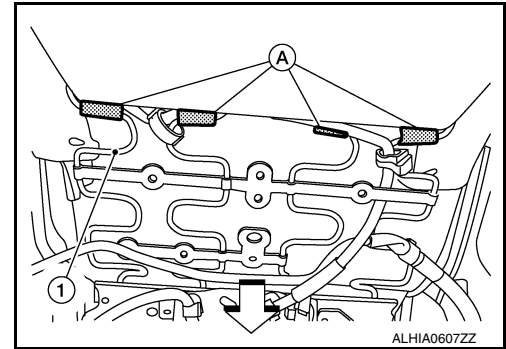
A
B
C
D
E
F
G
SR
I
J
K
L
M
N
O
P

OCCUPANT CLASSIFICATION SYSTEM

< REMOVAL AND INSTALLATION >

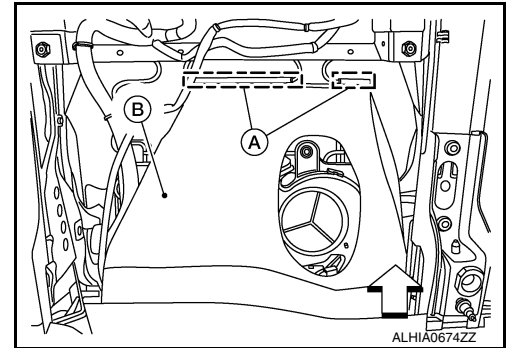
- For models without climate controlled passenger seat, install the rear hinge cover J-hooks (A) to the seat frame assembly (1).

⇐ : Front



8. Install the rear seatback flap (B) and connect the seatback J-hook (A) under the front passenger seat.

⇐ : Front



9. Install the seat cushion outer finisher (RH) to the front passenger seat using the following procedure.

- a. Install the screw (A) and seat cushion outer finisher [RH (1)].

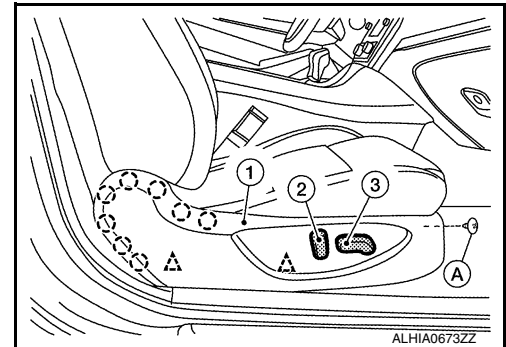
NOTE:

Make sure clips are secured to seat frame.

○ : Pawl

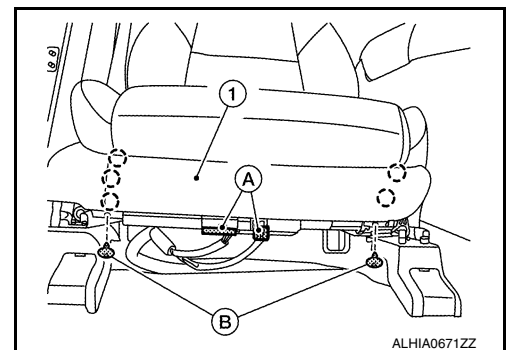
△ : Clip

- b. Install seat slide knob (3) and seat recline knob (2).



10. Connect the harness connectors (A) to the front passenger seat.
11. Install screws (B) and pawls then install the front passenger seat front finisher.

○ : Pawl



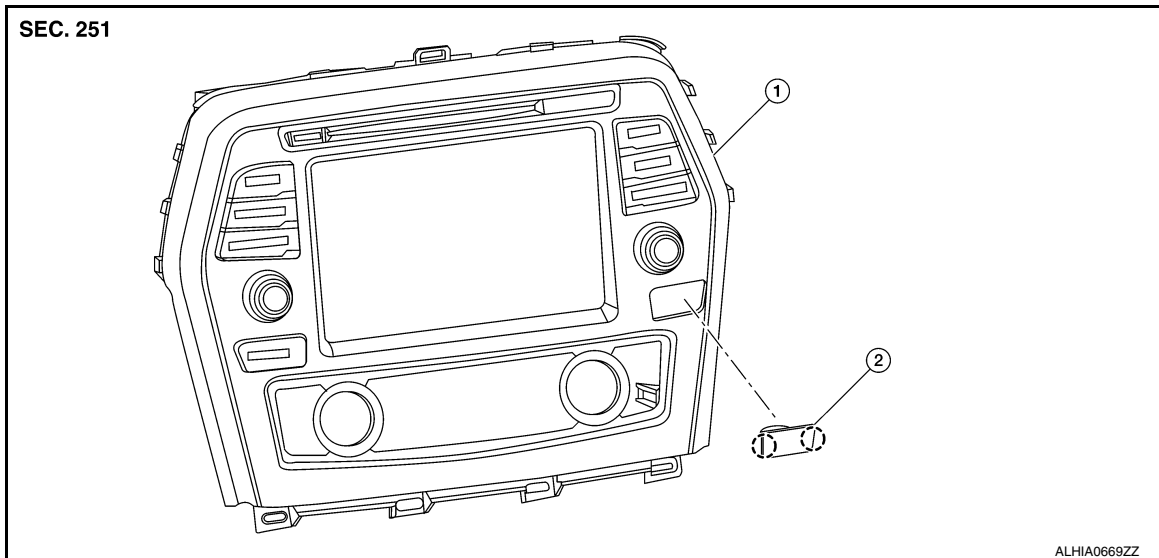
FRONT PASSENGER AIR BAG OFF INDICATOR

< REMOVAL AND INSTALLATION >

FRONT PASSENGER AIR BAG OFF INDICATOR

Exploded View

INFOID:000000012261587



1. Audio unit

2. Passenger air bag off indicator

Removal and Installation

INFOID:000000012261584

REMOVAL

1. Remove A/C switch assembly. Refer to [AV-183. "Removal and Installation"](#).
2. Release pawls then remove front passenger air bag OFF indicator.

INSTALLATION

Installation is in the reverse order of removal.

A
B
C
D
E
F
G
I
J
K
L
M
N
O
P

SR